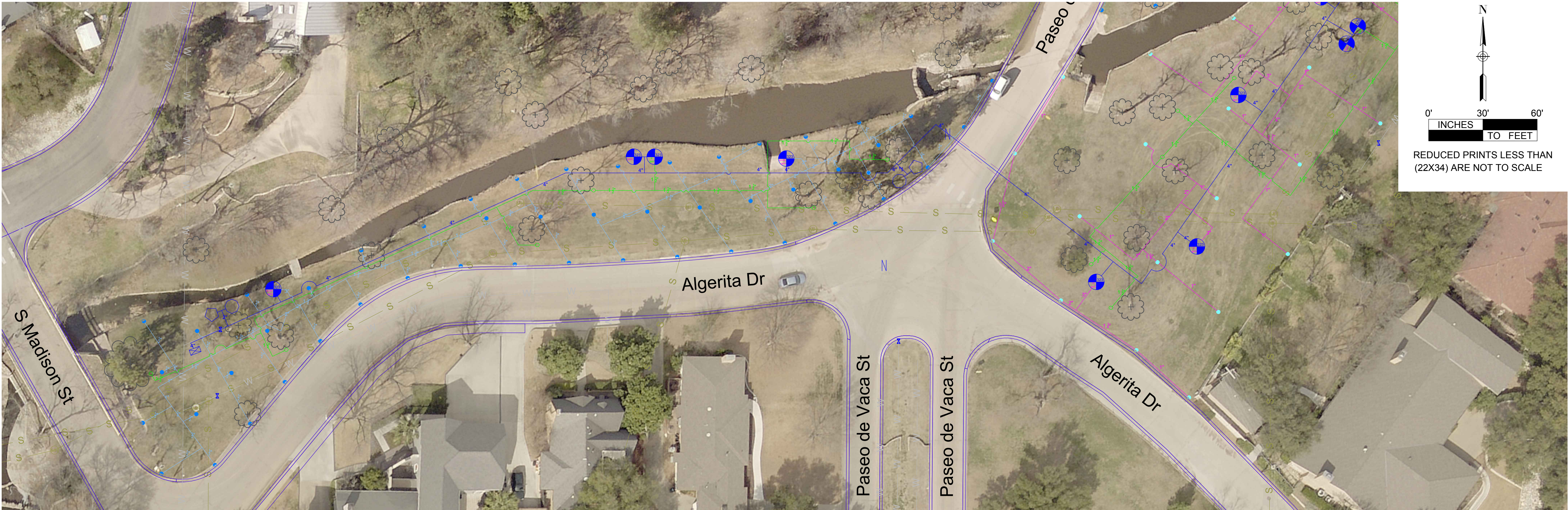



LEGEND

- Irrigation Controller

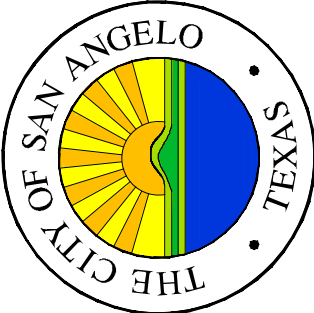
Hunter ICC2 controller mounted in a (ICC-PED-SS) Stainless Steel Hunter Pedestal, with remote (ROAM XL) provided by contractor.
- 2" water meter, 2" D.C.A., 2" y strainer and a 2" master valve (for central control). All Contractors should refer to the (landscape Irrigation system) 02811 section of the specifications for all details.
- Netafim cast iron 323 electric valves
- 4" PVC 200 lbs. gasket pipe, all fittings on the 4" mainline line will be cast iron with Harco fittings with mechanical restraint.
- 1" Rain Bird (44-NP) Quick Coupling Valve with Non-potable locking cover and Quick Coupler Valve Key (44-K).
- 2" " Female Ban Jo fitting with a 2" ball valve.
- 6" (sleeve) & 4" (sleeve) PVC pipe.
- 2" Drip supply line with a 2" ball valve.
- Rain Bird (8005 SS) rotor head with a # 12 nozzle. All rotor heads will be set level with the final grade.
- 4" Rain Bird (1804-SAM-PRS 45) Pop-up spray head. The spray head will have the appropriate MP Rotator nozzle according to the irrigation intent.
- 4" Rain Bird (1804-SAM-PRS) Pop-up spray head. The spray head will have the appropriate Rain Bird MPR nozzle according to the irrigation intent.
- 4" NIBCO Wedge GateVale / Isolation Valve with the Harco valve to pipe restraints.
- 4" Rain Bird (1804-SAM-PRS 45) Pop-up spray head. The spray head will have the appropriate Rain Bird 1400 Series pressure compensating full-circle bubbler nozzle (1404: 1.0 gpm) according to the irrigation intent.



CITY OF SAN ANGELO ENGINEERING SERVICES		
CITY HALL ANNEX 301 W. BEAUREGARD AVE. SAN ANGELO, TX. 76903 (325)657-4201 www.ccsa.tx.us		
		
NO	DESCRIPTION	DATE
ES-X-XX		
SULPHUR SPRINGS PARK IRRIGATION PROPOSAL PLAN		
FROM MADISON ST. TO MONTECITO DR.		
PROJECT NO: XXXX-XX-XXX		
DESIGN BY: INITIALS		DRAWN BY: INITIALS
SCALE: 1"=30'	DATE: 8/22/19	ARCHIVE NO: #####
SHEET NO. 1-2		



CITY OF SAN ANGELO
ENGINEERING SERVICES
CITY HALL ANNEX
301 W. BEAUREGARD AVE.
SAN ANGELO, TX. 76903
(325)657-4201
www.ccsa.tx.us



NO	DESCRIPTION	DATE

ES-X-XX	SULPHUR SPRINGS PARK IRRIGATION PROPOSAL PLAN FROM BISHOP ST. TO WASHINGTON DR. PROJECT NO: XXXX-XX-XXX	DESIGN BY: INITIALS DRAWN BY: INITIALS
---------	--	---

SCALE: 1"=30'	DATE: 8/22/19	ARCHIVE NO: #####	SHEET NO. I-3
---------------	---------------	-------------------	---------------