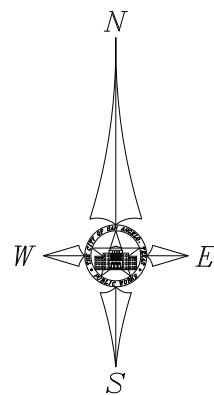


INDEX TO DRAWINGS

M-911-1	TYPICAL SECTIONS AND DETAILS 1
M-911-2	TYPICAL SECTIONS AND DETAILS 2
M-911-3	TYPICAL SECTIONS AND DETAILS 3
M-911-4	TYPICAL SECTIONS AND DETAILS 4
M-911-5	TYPICAL SECTIONS AND DETAILS 5
W-816	KNICKERBOCKER ROAD FROM BEATY ROAD TO THE SOUTHWEST
W-817	MACKENZIE STREET FROM ALGERITA STREET TO AVENUE K
W-819	MACKENZIE STREET FROM AVENUE K TO AVENUE L
W-821	ALTA LOMA CIRCLE FROM ALGERITA STREET TO PARK DRIVE
W-822	ARDEN ROAD FROM SAN ANTONIO STREET TO HORN STREET
W-823	HORN STREET FROM ARDEN ROAD TO SHERWOOD WAY
W-824	SHERWOOD WAY FROM ARDEN ROAD TO DIANA STREET
W-825	SHERWOOD WAY FROM DIANA STREET TO CLARK STREET
W-826	GILLIS STREET FROM 1ST STREET TO 2ND STREET
W-827	2ND STREET FROM GILLIS STREET TO CHADBOURNE STREET

PREPARED BY
THE CITY OF SAN ANGELO
DEPARTMENT OF ENGINEERING SERVICES

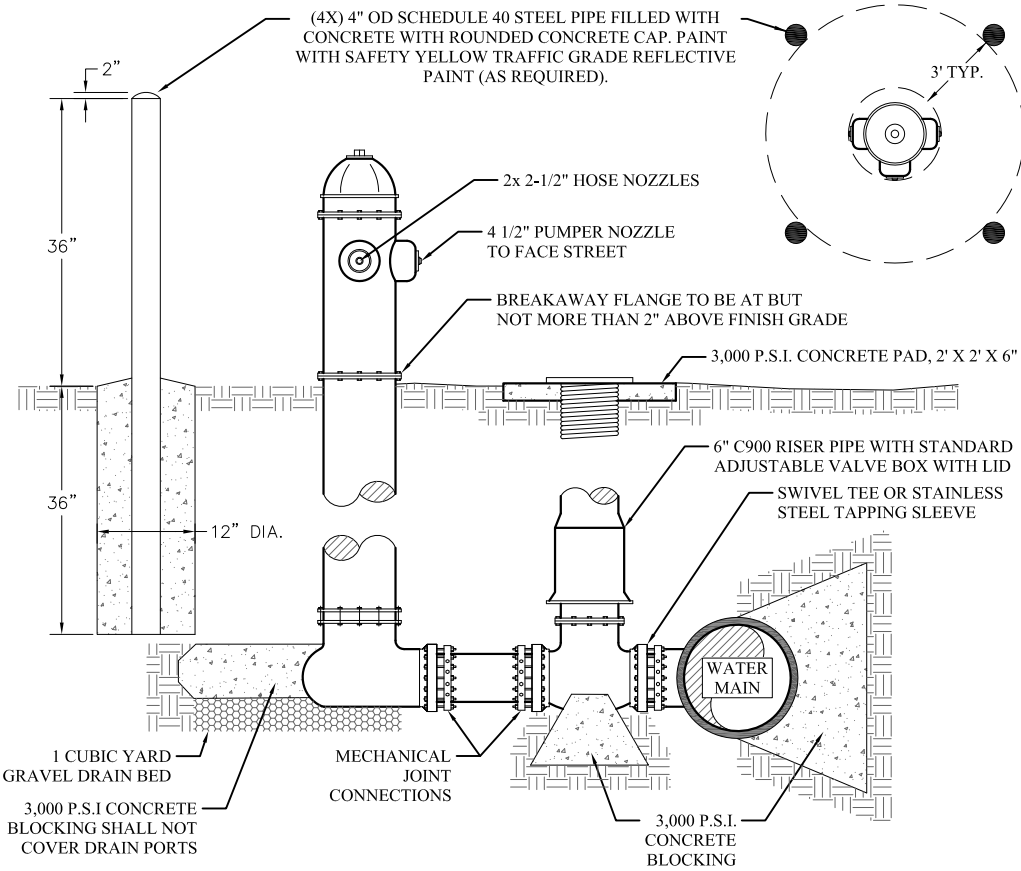


LEGEND
— PROJECT LOCATIONS

CITY OF SAN ANGELO
2016 WATER LINE IMPROVEMENTS
CONTRACT 1
2016-04-240

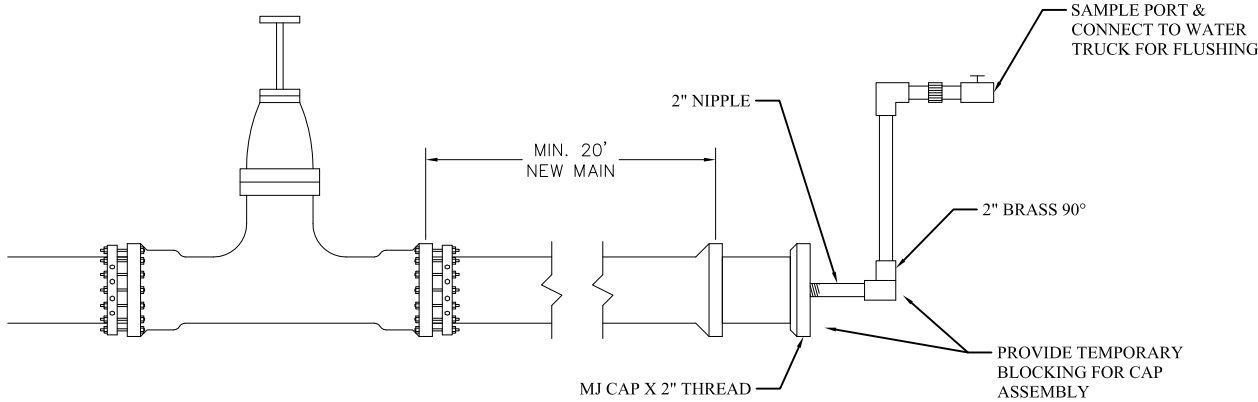


FIRE HYDRANT INSTALLATION
WITH PIPE BOLLARD PROTECTION

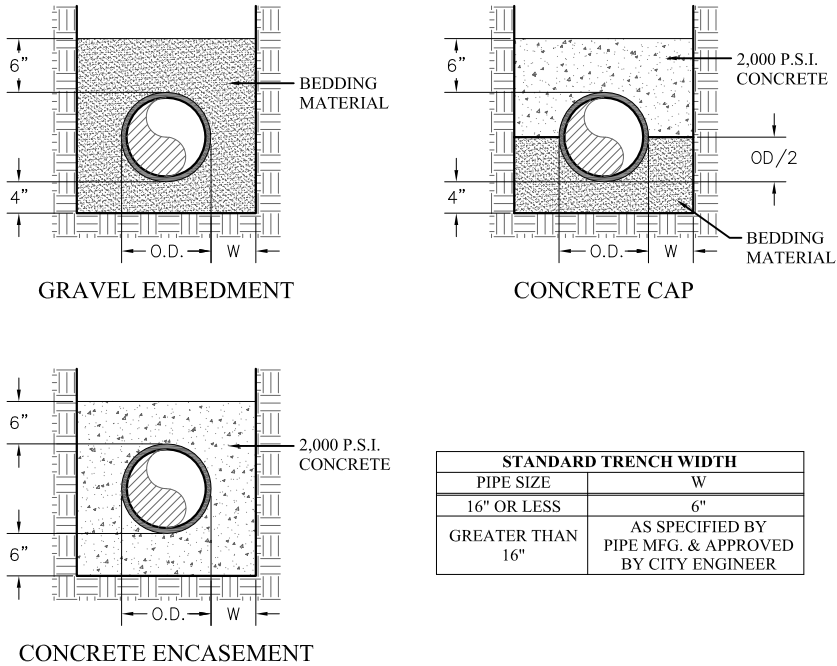


- NOTES**
- CONCRETE BLOCKING TO BE POURED TO UNDISTURBED SOIL.
 - PUMPER NOZZLE CAP TO BE NOT LESS THAN 18" NOR MORE THAN 36" BEHIND CURB.
 - WRAP ALL VALVES & FITTINGS WITH 3 MIL. POLYETHYLENE SHEET PLASTIC.
 - FIRE HYDRANT SHALL BE FACTORY PAINTED YELLOW.
 - ALL MECHANICAL JOINT CONNECTIONS SHALL BE MECHANICALLY RESTRAINED.
 - ALL PIPE SECTIONS SHALL BE A MINIMUM OF 10' IN LENGTH, UNLESS TOTAL LENGTH OF FIRE HYDRANT LEAD IS LESS THAN 10', OR UNLESS APPROVED OTHERWISE BY THE CITY.
 - BOLLARDS REQUIRED IN AREAS WHERE HYDRANT IS SUSCEPTIBLE TO VEHICULAR DAMAGE OR SPECIFIED ON THE PLANS.

TEMPORARY CONNECTION
TESTING, SAMPLING & FLUSHING

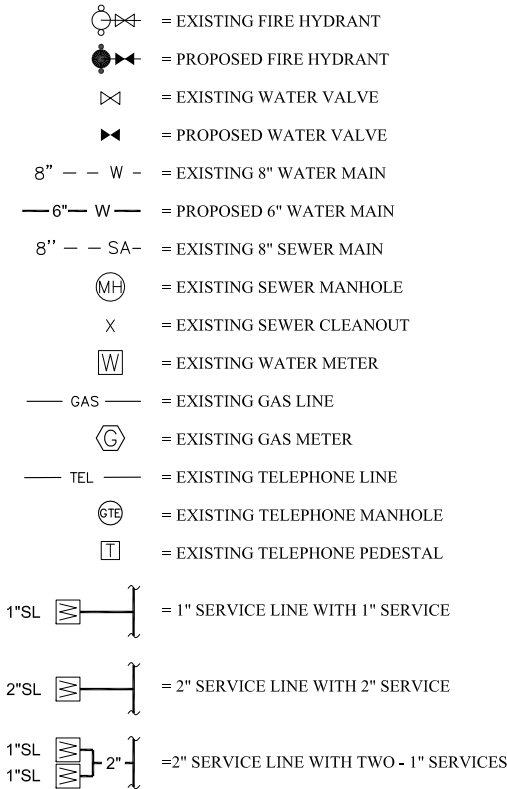


PIPE EMBEDMENT ZONE
WATER AND SEWER MAINS



- NOTES:**
- BEDDING MATERIAL FOR THE INSTALLATION OF WATER AND SEWER MAINS SHALL BE CRUSHED STONE OR PEA GRAVEL THAT WILL REMAIN FIRM AND NOT PERMIT DISPLACEMENT OF THE PIPE EITHER DURING PIPE LAYING OR BACKFILLING OR FOLLOWING THE COMPLETION OF CONSTRUCTION.
 - BEDDING MATERIAL SHALL BE FROM AN APPROVED BEDDING MATERIAL SOURCE PER THE LIST OF APPROVED BEDDING SUPPLIERS OR BE APPROVED BY THE CITY ENGINEER.
 - TRENCH SPOILS ARE NOT ACCEPTABLE FOR "EMBEDMENT ZONE MATERIAL"

LEGEND

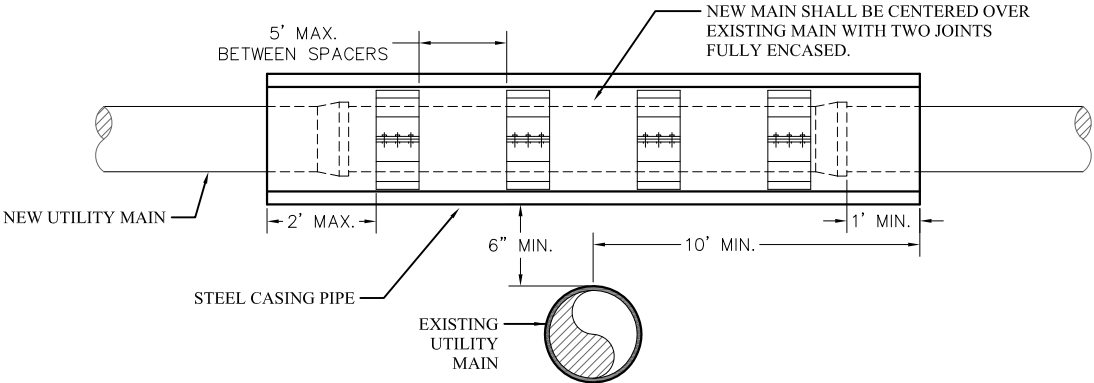


NOTES

- LOCATION OF EXISTING AND PROPOSED UTILITIES SHOWN ARE MERELY SCHEMATIC. THE CONTRACTOR IS RESPONSIBLE FOR LOCATION OF ALL UTILITIES PRIOR TO COMMENCING CONSTRUCTION.
- KILL OUT AND ABANDON EXISTING LINE AT THE MAIN. THIS WORK INCLUDES REMOVAL OF ALL OLD VALVE STANDS AND FIRE HYDRANTS THAT ARE NO LONGER NEEDED AND THE REPAIR OF ALL PAVEMENT AND CONCRETE DAMAGED BY THE WORK. (LOCATION AS SHOWN ON PLANS.)
- PIPE EMBEDMENT SHALL BE AS SHOWN UNLESS NOTED OTHERWISE.
- PAVEMENT CUTS SHALL BE REPAIRED ACCORDING TO CITY OF SAN ANGELO UTILITY TRENCH REPAIR SPECIFICATIONS.
- WHEN WATER LINES ARE INSTALLED WITH LESS THAN 9 FEET SEPARATION FROM ANY PART OF THE WASTE WATER COLLECTION SYSTEM, THE INSTALLATION SHALL BE IN ACCORDANCE WITH 30 TAC 290. 44(E)
- CONNECT TO EXISTING MAIN WITH A WET TAP. CONTRACTOR SHALL PROVIDE ALL MATERIAL, EQUIPMENT, LABOR AND MAKE TAP. THE CONTRACTOR SHALL PRESSURE TEST THE SADDLE AGAINST THE VALVE PRIOR TO TAPPING THE LINE. (LOCATION AS SHOWN ON PLANS.)
- TIE-IN TO EXISTING WATER LINE.
- ALL SERVICE LINES & FIRE HYDRANTS TO BE FIELD LOCATED.
- CONNECT NEW SERVICE LINE TO EXISTING METER. REMOVE OLD SERVICE LINE FROM THE METER BOX. THE CONTRACTOR SHALL PROVIDE & INSTALL NEW METER BOXES. WHERE THE EXISTING METER LOCATION IS MORE THAN 5 FEET BEHIND THE CURB LINE, AT THE DIRECTION OF THE OWNER, THE CONTRACTOR SHALL RELOCATE THE METER TO WITHIN 5 FEET OF THE CURB; INCLUDING RE-PLUMBING OF THE CUSTOMER SERVICE LINE. RELOCATION OF METERS REQUIRING RELOCATION OF CUSTOMER SERVICES WILL BE PAID AS PARTIAL PLUMBER RELOCATED SERVICES AT THE RATE INDICATED ON THE BID SHEET. ALL SERVICE LINE RELOCATES SHALL BE A MINIMUM OF 1 1/2" SCHEDULE 40 PVC ON CUSTOMER SIDE OF METER.
- INSTALL A NEW FIRE HYDRANT AT THIS LOCATION WITH SWIVEL TEE AT THE MAIN ON ALL FIRE HYDRANTS.
- INSTALL TEMPORARY 2" FLUSH LINE WHERE NEEDED FOR TESTING & SAMPLING. CONNECT TO EXISTING MAIN. WATER SAMPLES TO BE TAKEN AT NEW MAIN TIE-IN. (LOCATION AS SHOWN ON PLANS)
- NEW WATER LINES SHALL BE LOCATED ADJACENT TO THE SOUTH OR WEST CURB OR EDGE OF PAVEMENT OR AS DETERMINED BY OWNER.
- ALL NEW WATER LINES SHALL COMPLY FULLY WITH THE SPECIFICATIONS.
- THE CONTRACTOR SHALL RELOCATE EXISTING SERVICES SERVED IN THE ALLEYS TO STREET SERVICES. THE CONTRACTOR SHALL RUN NEW SERVICE LINES (MINIMUM OF 1-1/2") UNDER THE DIRECTION OF A LICENSED PLUMBER. TYPICAL, BUT NOT LIMITED TO, REPLACEMENT OF THE CUSTOMER SERVICE LINE SHALL BE FROM THE CURB TO THE BACK OF THE RESIDENCE. (LOCATION AS SHOWN ON PLANS.)
- REMOVE EXISTING FIRE HYDRANT AND REPLACE WITH NEW FIRE HYDRANT. CONNECT NEW HYDRANT TO NEW MAIN AT THIS LOCATION. (LOCATION AS SHOWN ON PLANS.)
- ALL WORK ON THE CUSTOMER SERVICE LINE SHALL BE DONE BY A LICENSED PLUMBER IN FULL COMPLIANCE WITH THE C.O.S.A. PERMIT REQUIREMENTS.
- ALL MECHANICAL JOINTS SHALL BE INSTALLED WITH EBBA IRON "MEGA LUG" PIPE RESTRAINERS OR EQUAL AS APPROVED BY THE OWNER. ALL TRANSITION COUPLINGS OR SOLID SLEEVES SHALL BE LONG BARREL (MIN. 12").
- PAVEMENT CUTS SHALL BE BACKFILLED AND A TEMPORARY ASPHALT PATCH PLACED TO STABILIZE THE CUT WITHIN 48 HOURS OF CONSTRUCTION. (LOCATION AS SHOWN ON PLANS.)
- ALL VALVES SHALL BE MARKED ON NEAREST CURB WITH MEASUREMENT AND SYMBOL .
- CONTRACTOR TO REPLACE ALL TRAFFIC BUTTONS, REFLECTORS, STRIPING & PAINTING.

MT	RP	N/A	N/A	2016-04-240	NOVEMBER 2016
DRAWN BY: CHECKED BY: HORIZONTAL SCALE: VERTICAL SCALE: JOB NUMBER: DATE:					
ENGINEERING SERVICES DEPARTMENT					
2016 WATER LINE IMPROVEMENTS			TYPICAL SECTIONS & DETAILS 1		
The Seal appearing on this document was authorized by Russell J. Pehl, P.E. 104755 on: November 4, 2016					
M-911-1					

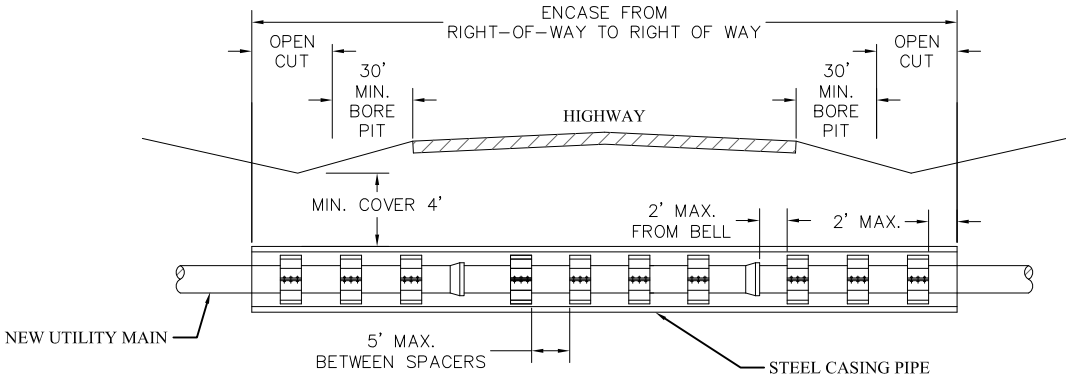
UTILITY CROSSING



NOTES:

1. ALL WATER-SEWER CROSSING SITUATIONS WHERE A NEW MAIN WILL CROSS WITHIN 2' VERTICALLY OF AN EXISTING MAIN SHALL BE ENCASED AS SHOWN ABOVE.
2. CASING PIPE SHALL BE A MINIMUM 20' LENGTH OF DUCTILE IRON, STEEL OR C-900 PVC PIPE WITH GASKETED OR WELDED JOINTS AND BE TWO NOMINAL PIPE SIZES LARGER THAN THE CARRIER PIPE.
3. EACH END OF CASING SHALL BE SEALED WITH WATERTIGHT NON-SHRINK GROUT OR A MANUFACTURED WATERTIGHT SEAL.
4. HDPE CASING SPACERS SHALL BE PLACED AT MAXIMUM 5' INTERVALS AND WITHIN 2' FROM EACH BELL AND END OF CASING.
5. CROSSING SITUATIONS NOT COVERED BY THIS DETAIL SHALL BE ACCOMPLISHED IN ACCORDANCE WITH COSA DESIGN STANDARDS AND TCEQ CHAPTERS 217 AND 290.

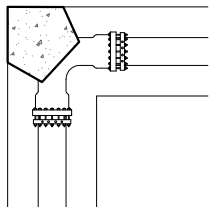
HIGHWAY CROSSING



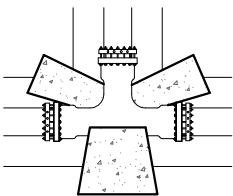
NOTES

1. ALL HIGHWAY CROSSINGS AND STREET CROSSINGS WHERE REQUIRED SHALL BE MADE BY BORING OR TUNNELING.
2. CASING PIPE SHALL BE MINIMUM 3/8" STEEL PIPE WITH WELDED JOINTS AND BE TWO NOMINAL PIPE SIZES LARGER THAN THE CARRIER PIPE.
3. CASING SHALL EXTEND FROM EDGE OF RIGHT-OF-WAY TO EDGE OF RIGHT-OF-WAY OR AS SPECIFIED IN THE PLANS.
4. EACH END OF CASING SHALL BE SEALED WITH WATERTIGHT NON-SHRINK GROUT OR A MANUFACTURED WATERTIGHT SEAL.
5. ALL OVER CUTTING IN EXCESS OF 1" AROUND CASING PIPE SHALL BE PRESSURE GROUTED.
6. GROUT SHALL HAVE A MINIMUM STRENGTH OF 1,800 P.S.I. IN 28 DAYS WITH A SLUMP OF 10" OR GREATER.
7. HDPE CASING SPACERS SHALL BE PLACED AT MAXIMUM 5' INTERVALS AND 2' FROM EACH BELL AND END OF CASING.
8. BORE PITS SHALL BE LOCATED AND CONFINED TO THE WORK EASEMENT AND SHALL BE CONSTRUCTED IN SUCH A MANNER AS TO NOT INTERFERE WITH HIGHWAY STRUCTURAL INTEGRITY OR SAFE TRAFFIC OPERATIONS. IF NECESSARY, SHORING SHALL BE USED.

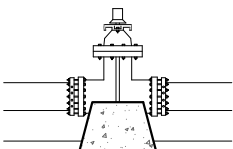
THRUST BLOCKING



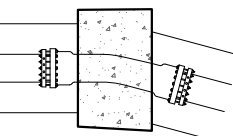
BENI



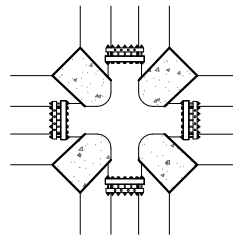
TEI



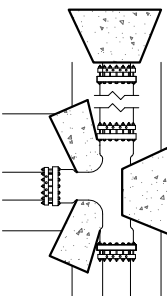
VALVE



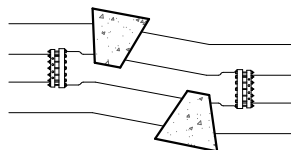
VERTICAL BEND



CROSS



TEE WITH STUBOUT



OFFSET

NOTES:

1. ALL MECHANICAL JOINT CONNECTIONS ON BENDS AND VALVES SHALL BE MECHANICALLY RESTRAINED AND CONCRETE BLOCKED AS SHOWN.
2. ALL CONCRETE SHALL BE 3,000 P.S.I.
3. ALL STUB OUT PIPE SECTIONS SHALL BE A MINIMUM OF 20' IN LENGTH UNLESS APPROVED OTHERWISE BY THE CITY
4. IF STUBOUT ENCOMPASSES MORE THAN ONE JOINT, BELL JOINT RESTRAINTS SHALL BE USED.
5. ALL DUCTILE IRON SHALL BE WRAPPED IN MINIMUM 3 MIL. POLY SHEETING

DRAWN BY:	MT
CHECKED BY:	RP
HORIZONTAL SCALE:	1"=100'
VERTICAL SCALE:	N/A
JOB NUMBER:	2016-04-240
DATE:	NOVEMBER 2016

ENGINEERING
SERVICES
DEPARTMENT



2016 WATER LINE IMPROVEMENTS

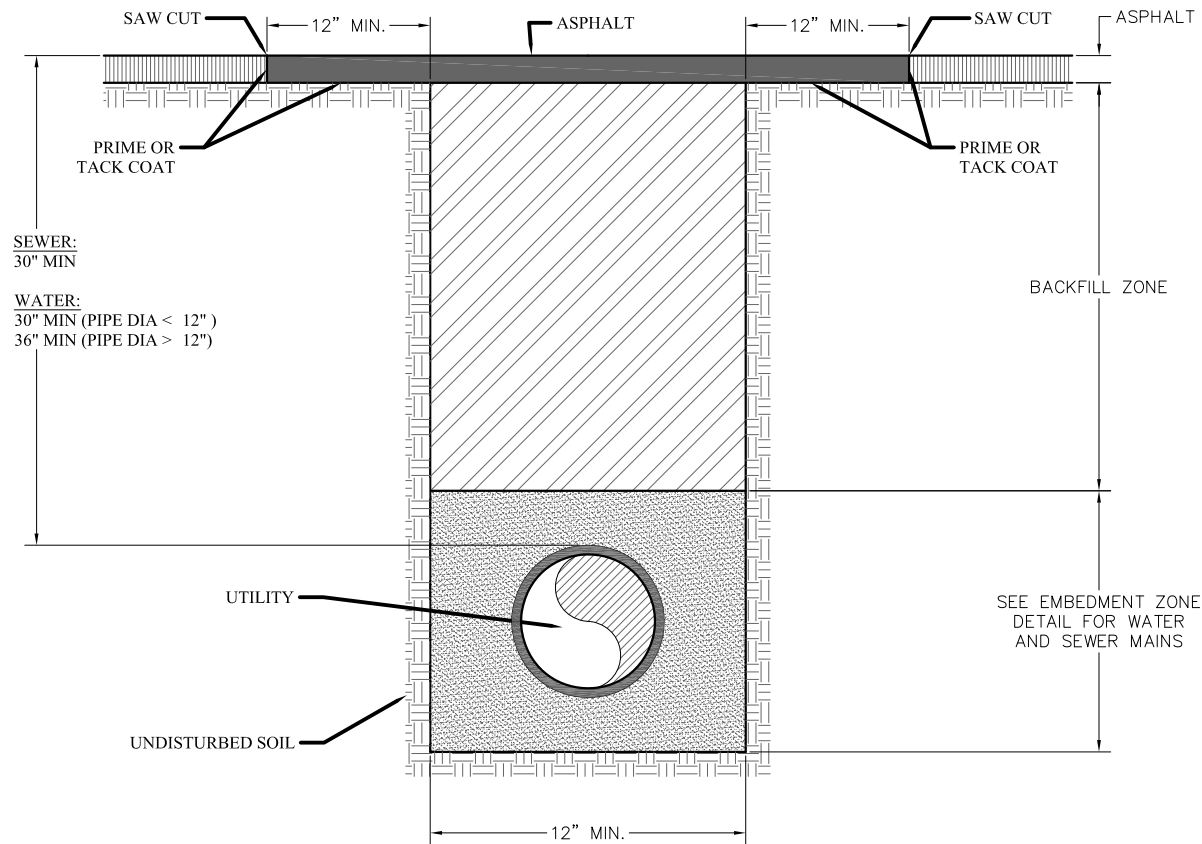
TYPICAL SECTIONS & DETAILS 3

The Seal appearing on this document was authorized by Russell J. Pehl, P.E. 104755 on: November 4, 2016



M-911-3

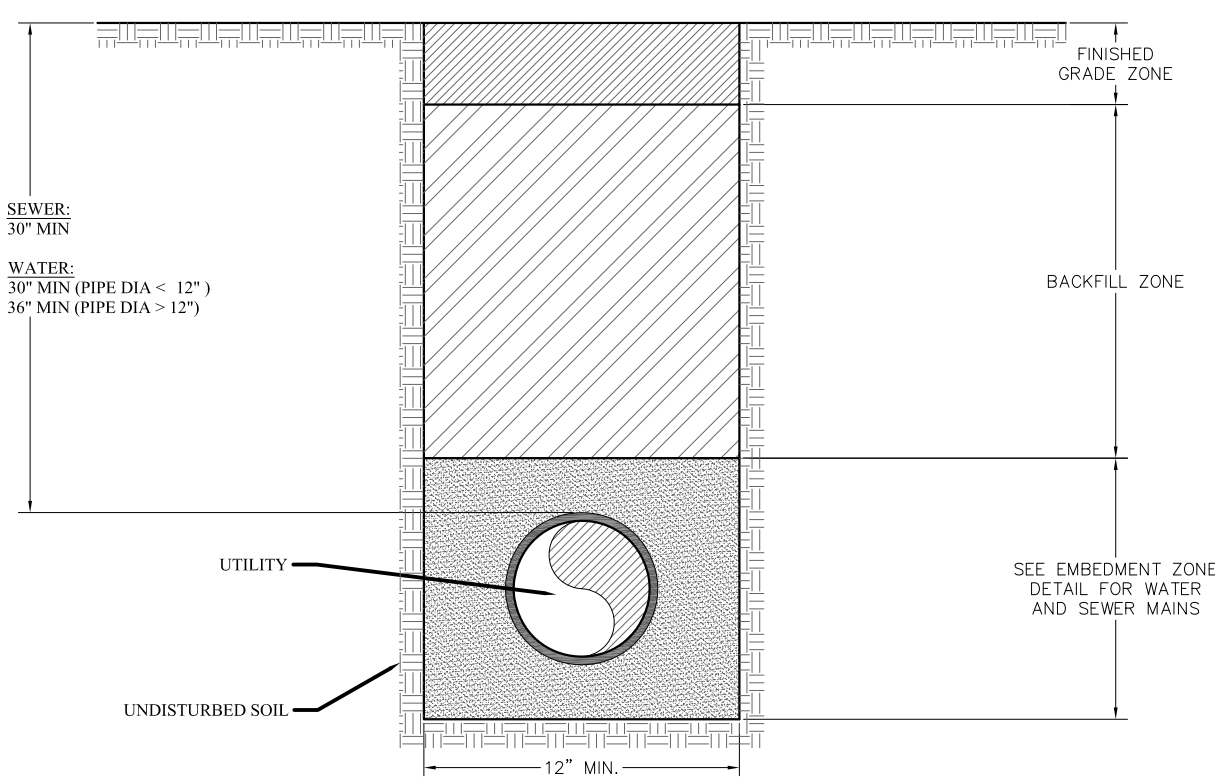
UTILITY TRENCH SECTION
ASPHALT PAVEMENT



NOTES:

- ASPHALT: 2" LAYER
TYPE D, TXDOT HOT MIX OR
TYPE D, TXDOT HOT MIX - COLD LAID
(MUST HAVE PRIOR CITY APPROVAL)
- PRIME COAT: TXDOT MC-30 OR AE-P ASPHALT AT THE RATE OF 0.25 TO 0.35 GALLON PER SQUARE YARD OF SURFACE
- TACK COAT: SHALL MEET THE REQUIREMENTS OF TXDOT ITEM 300 "ASPHALTS, OILS, AND EMULSIONS".
- BACKFILL ZONE: FLEXIBLE BASE PER CITY OF SAN ANGELO SPECIFICATIONS
COMPACTED IN 6" HORIZONTAL LAYERS. MINIMUM DENSITY 95% MODIFIED PROCTOR.
- COVER: WATER OR SEWER MAINS AND SERVICES WITH LESS THAN 30" OF COVER AT ANY LOCATION SHALL
REQUIRE C.O.S.A. APPROVAL PRIOR TO CONSTRUCTION.

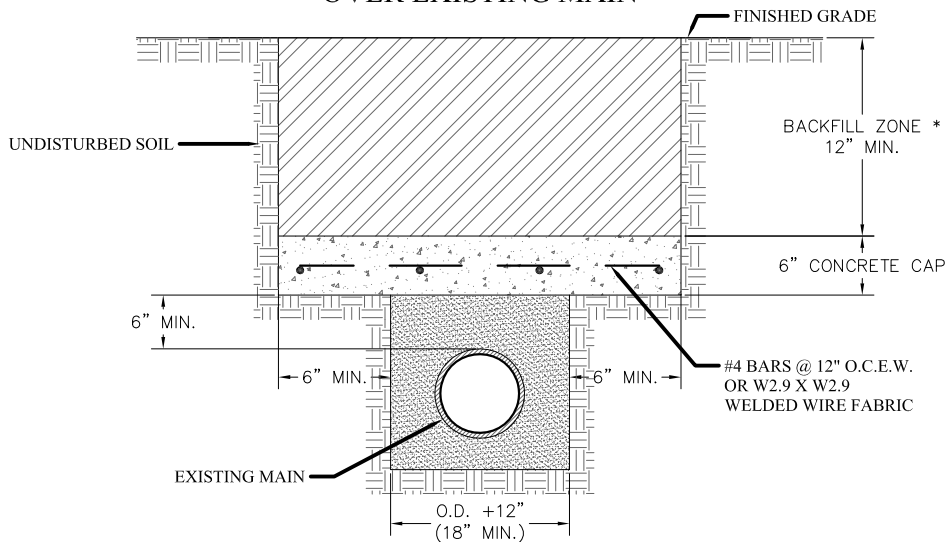
UTILITY TRENCH SECTION
OTHER UNPAVED AREAS



NOTES:



- BACKFILL ZONE:
- OPTION #1: WHERE PULVERIZED OR GRANULAR MATERIAL IS AVAILABLE FROM EXCAVATION WHICH IS FREE OF SHARP EDGED STONES, OR STONES LARGER THAN 3" IN DIAMETER, CLAY, ORGANIC MATTER, OR OTHER UNSUITABLE SUBSTANCES, HAS A PI<=20 AND LL<=40, AND MEETS THE APPROVAL OF THE CITY SUCH MATERIAL MAY BE USED FOR BACKFILL MATERIAL AS INSTRUCTED BY THE OWNER. BACKFILL SHALL BE COMPACTED TO DENSITIES EQUAL TO OR GREATER THAN THAT OF SURROUNDING SOIL.
- OPTION #2: FLEXIBLE BASE PER CITY OF SAN ANGELO SPECIFICATIONS COMPACTED IN 6" HORIZONTAL LAYERS TO MINIMUM DENSITY 95% MODIFIED PROCTOR.
- FINISHED GRADE ZONE:
- BACKFILL SHALL MATCH EXISTING GROUND CONDITIONS (SEE OPTIONS BELOW) OR AS DIRECTED BY THE OWNER.
- OPTION A: UTILIZE BACKFILL ZONE MATERIAL FROM OPTION #1
- OPTION B: 6" TOP SOIL.
- OPTION C: 8" FLEXIBLE BASE
- COVER: WATER OR SEWER MAINS AND SERVICES WITH LESS THAN 30" OF COVER AT ANY LOCATION SHALL REQUIRE C.O.S.A. APPROVAL PRIOR TO CONSTRUCTION.

CONCRETE CAP
OVER EXISTING MAIN



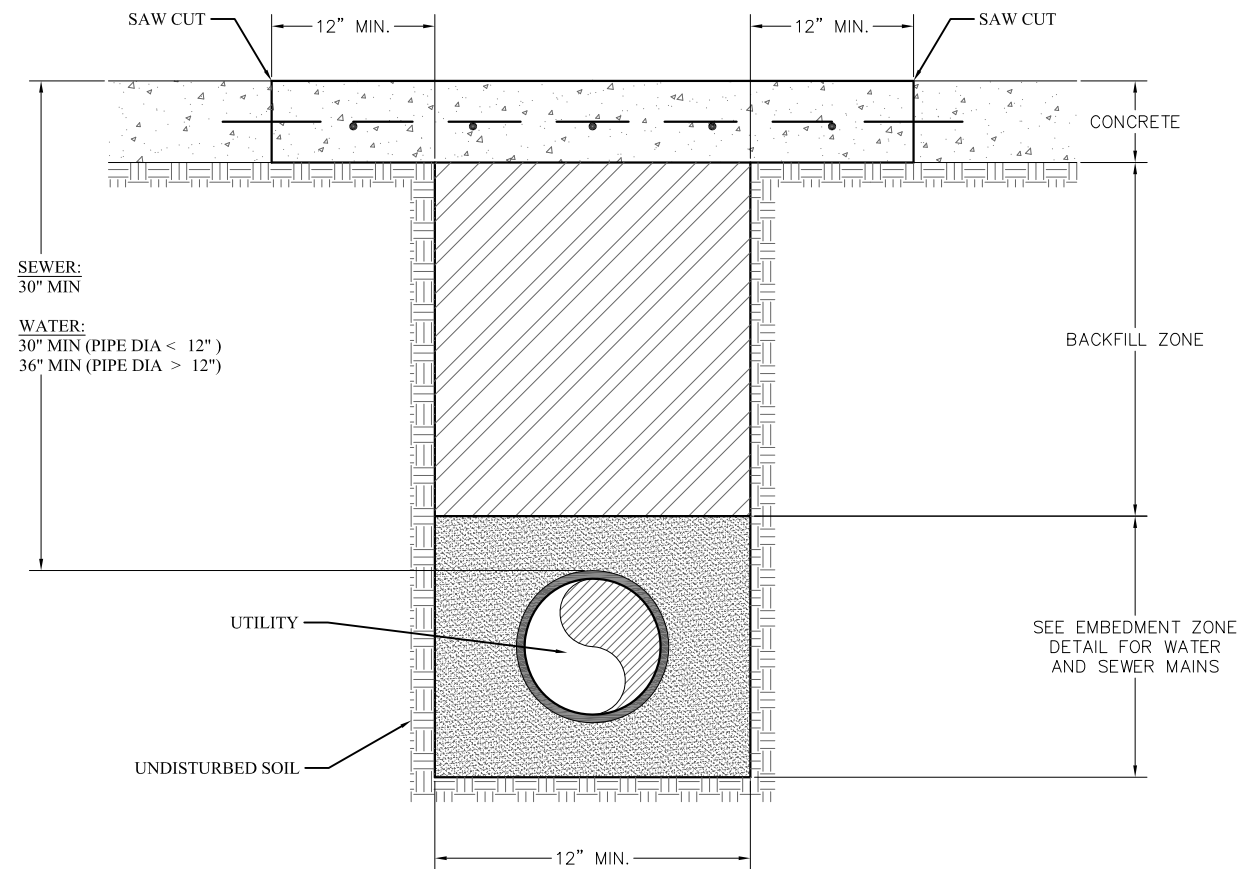
NOTES:

- CONTRACTOR SHALL POT-HOLE EXISTING MAIN TO BE CAPPED A MINIMUM OF EVERY 50' TO DETERMINE EXACT DEPTH PRIOR TO EXCAVATING FOR PLACEMENT OF CONCRETE CAP. DEPTH VARIATIONS WILL REQUIRE ADDITIONAL POT-HOLING TO ENSURE THE EXISTING MAIN IS NOT DAMAGED.
 - CONCRETE CAPS SHALL BE PLACED ON FIRM UNDISTURBED SOIL. ANY DISTURBED SOILS SHALL BE RECOMPACTED AT OPTIMUM MOISTURE TO MATCH OR EXCEED SURROUNDING UNDISTURBED SOIL'S DENSITY PRIOR TO PLACING OF CAP.
- * REFER TO UTILITY TRENCH SECTION REPAIR DETAILS FOR BACKFILL AND SURFACE REPAIR REQUIREMENTS.

MT	RP	1"=100'	N/A	2016-04-240	NOVEMBER 2016
DRAWN BY:	CHECKED BY:	HORIZONTAL SCALE:	VERTICAL SCALE:	JOB NUMBER:	DATE:
ENGINEERING SERVICES DEPARTMENT					
					
2016 WATER LINE IMPROVEMENTS			TYPICAL SECTIONS & DETAILS 4		
<p>The Seal appearing on this document was authorized by Russell J. Pehl, P.E. 104755 on: November 4, 2016</p>  <p>Russell J. Pehl</p>					
M-911-4					

UTILITY TRENCH SECTION

RIGID PAVEMENT

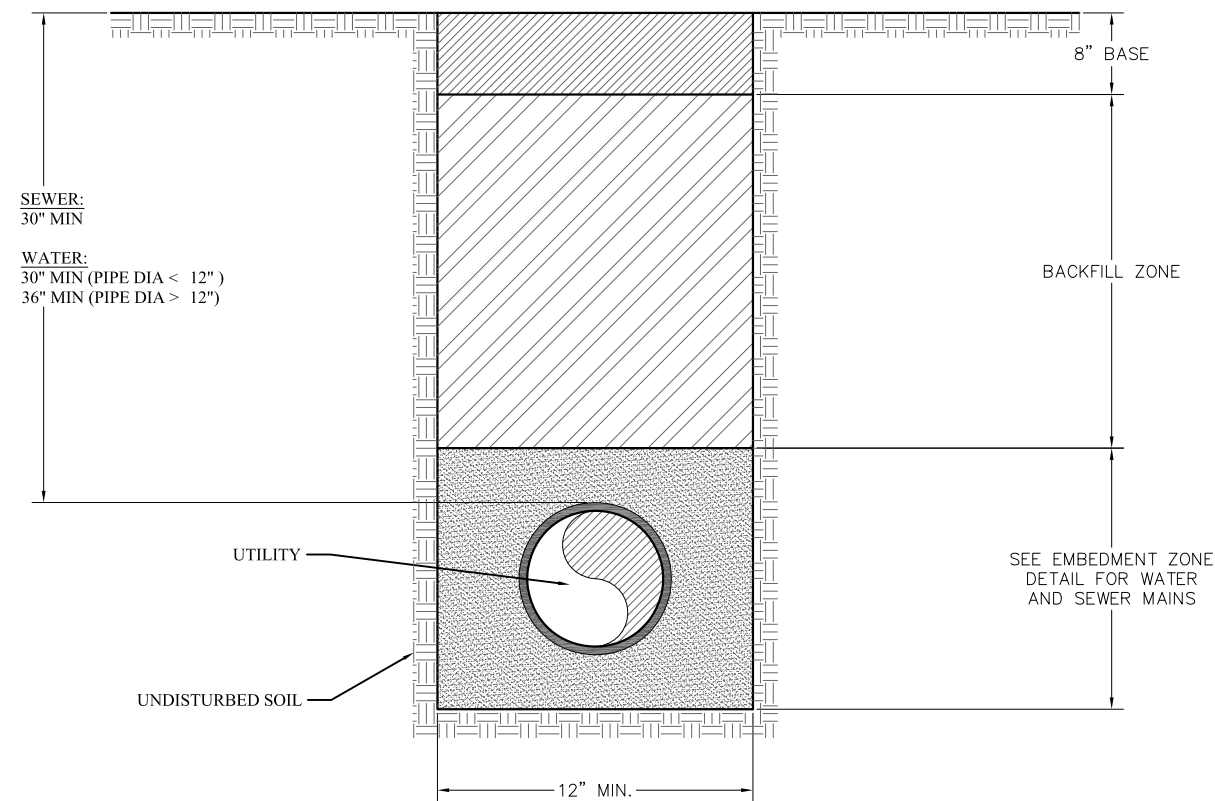


NOTES:

1. WATER OR SEWER MAINS AND SERVICES WITH LESS THAN 30" OF COVER AT ANY LOCATION SHALL REQUIRE C.O.S.A. APPROVAL PRIOR TO CONSTRUCTION.
2. CLASS P, 4,400 P.S.I. COMPRESSIVE; 680 P.S.I. FLEXURAL AT 28 DAY TEST. BEND EXISTING REBAR INTO CENTER OF NEW CONCRETE. REPLACE AS NECESSARY WITH #4 REBAR ON 12" CENTERS EACH WAY AND DOWEL IN #4 REBAR 9" DEEP WITH 24" LAP SPLICE AND MUST BE ALLOWED TO CURE FOR A PERIOD OF NOT LESS THAN 72 HOURS, OR CLASS P, 4,400 P.S.I. WITH 36 POUNDS OF NOVAMESH 850 PER CUBIC YARD WITH #4 REBAR DOWELS 9" DEEP AND 9" INTO THE TRENCH ON 18" CENTERS AND MUST BE ALLOWED TO CURE FOR A PERIOD OF NOT LESS THAN 72 HOURS.
3. CLASS K, 4,400 P.S.I. COMPRESSIVE; 680 P.S.I. FLEXURAL AT 28 DAY TEST. BEND EXISTING REBAR INTO CENTER OF NEW CONCRETE. REPLACE AS NECESSARY WITH #4 REBAR ON 12" CENTERS EACH WAY AND DOWEL IN #4 REBAR 9" DEEP WITH 24" LAP SPLICE AND MUST BE ALLOWED TO CURE FOR A PERIOD OF NOT LESS THAN 24 HOURS, OR CLASS K, 4,400 P.S.I. WITH 36 POUNDS OF NOVAMESH 850 PER CUBIC YARD WITH #4 REBAR DOWELS 9" DEEP AND 9" INTO THE TRENCH ON 18" CENTERS AND MUST BE ALLOWED TO CURE FOR A PERIOD OF NOT LESS THAN 24 HOURS.
4. FLEXIBLE BASE PER CITY OF SAN ANGELO SPECIFICATIONS COMPACTED IN 6" HORIZONTAL LAYERS. MINIMUM DENSITY 95% MODIFIED PROCTOR. (UNLESS APPROVED OTHERWISE IN WRITING).

UTILITY TRENCH SECTION

UNPAVED STREETS, ALLEYS & DRIVEWAYS



NOTES:

BASE: FLEXIBLE BASE PER CITY OF SAN ANGELO SPECIFICATIONS. COMPACTED IN 6" LAYERS. MINIMUM DENSITY 95% MODIFIED PROCTOR.

BACKFILL ZONE: WHERE PULVERIZED OR GRANULAR MATERIAL IS AVAILABLE FROM EXCAVATION WHICH IS FREE OF SHARP EDGED STONES, OR STONES LARGER THAN 3" IN DIAMETER, CLAY, ORGANIC MATTER, OR OTHER UNSUITABLE SUBSTANCES, HAS A PI<= 20 AND LL<=40, AND MEETS THE APPROVAL OF THE CITY. SUCH MATERIAL MAY BE USED FOR BACKFILL MATERIAL AS INSTRUCTED BY THE OWNER.

COVER: WATER OR SEWER MAINS AND SERVICES WITH LESS THAN 30" COVER AT ANY LOCATION SHALL REQUIRE C.O.S.A. APPROVAL PRIOR TO CONSTRUCTION.

The Seal appearing on this document was authorized by Russell J. Pehl, P.E. 104755



M-911-5

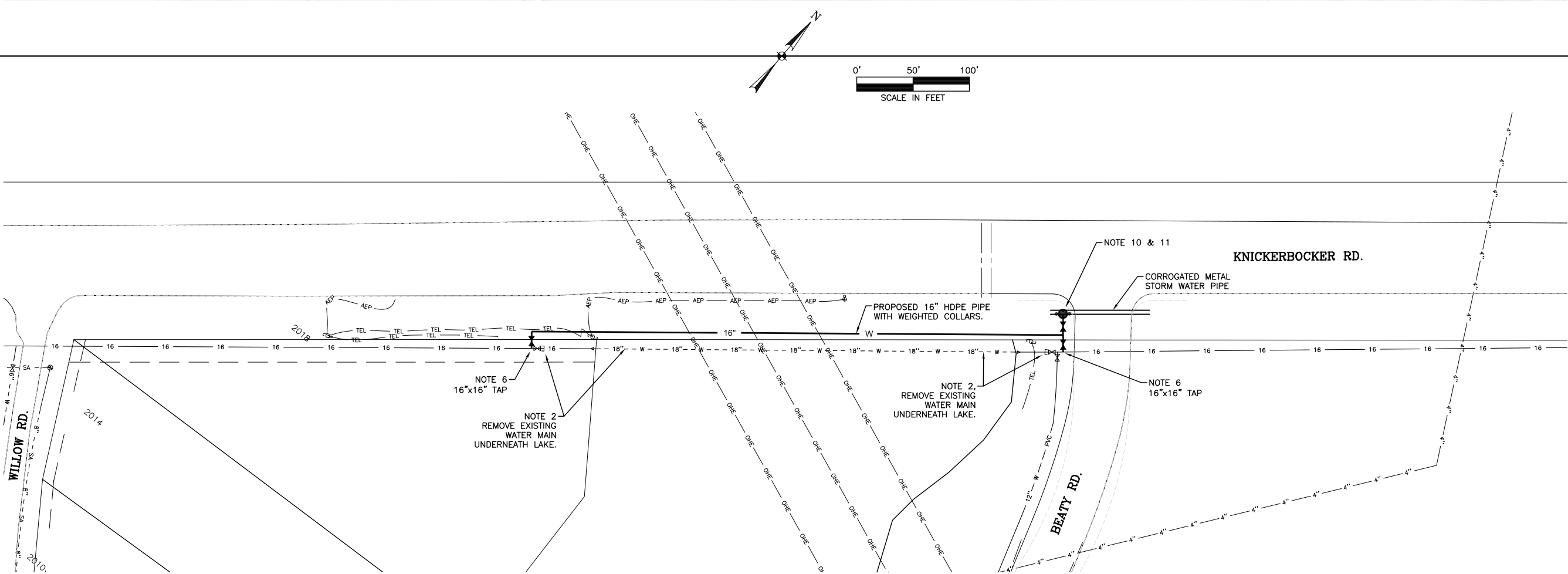
MT	DRAWN BY:
RP	CHECKED BY:
1" =	HORIZONTAL SCALE:
N/A	VERTICAL SCALE:
201	JOB NUMBER:
NOV	DATE:

ENGINEERING
SERVICES
DEPARTMENT



2016 WATER LINE IMPROVEMENTS

TYPICAL SECTIONS & DETAILS 5



DRAWN BY:	MT
CHECKED BY:	RP
HORIZONTAL SCALE:	1"=100'
VERTICAL SCALE:	N/A
JOB NUMBER:	2016-04-240
DATE:	NOVEMBER 2016

ENGINEERING
SERVICES
DEPARTMENT



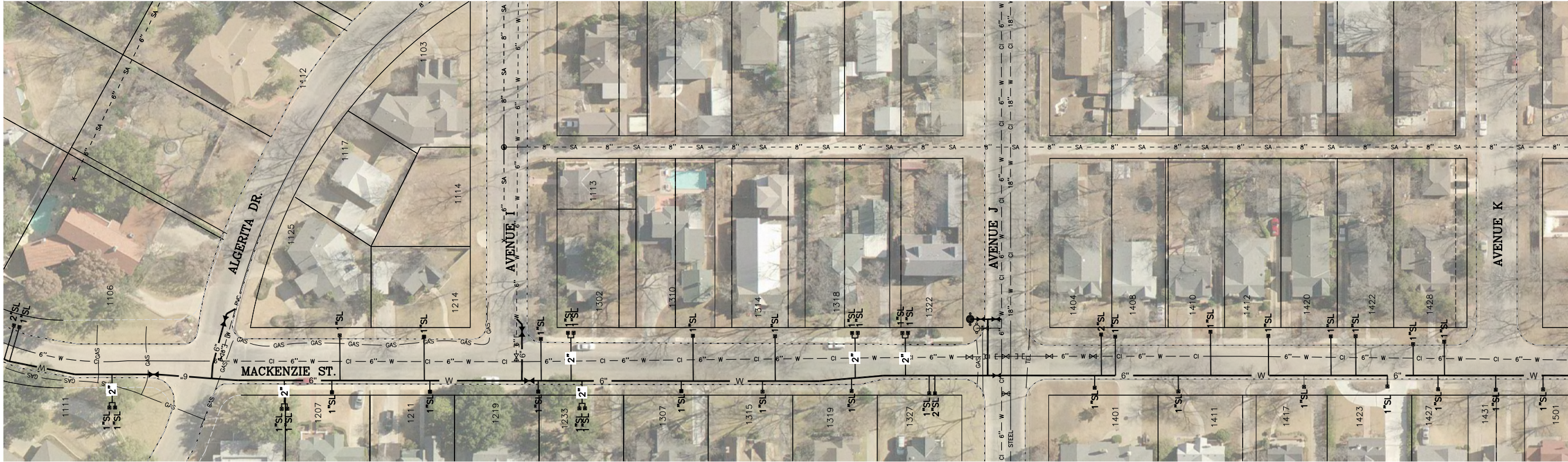
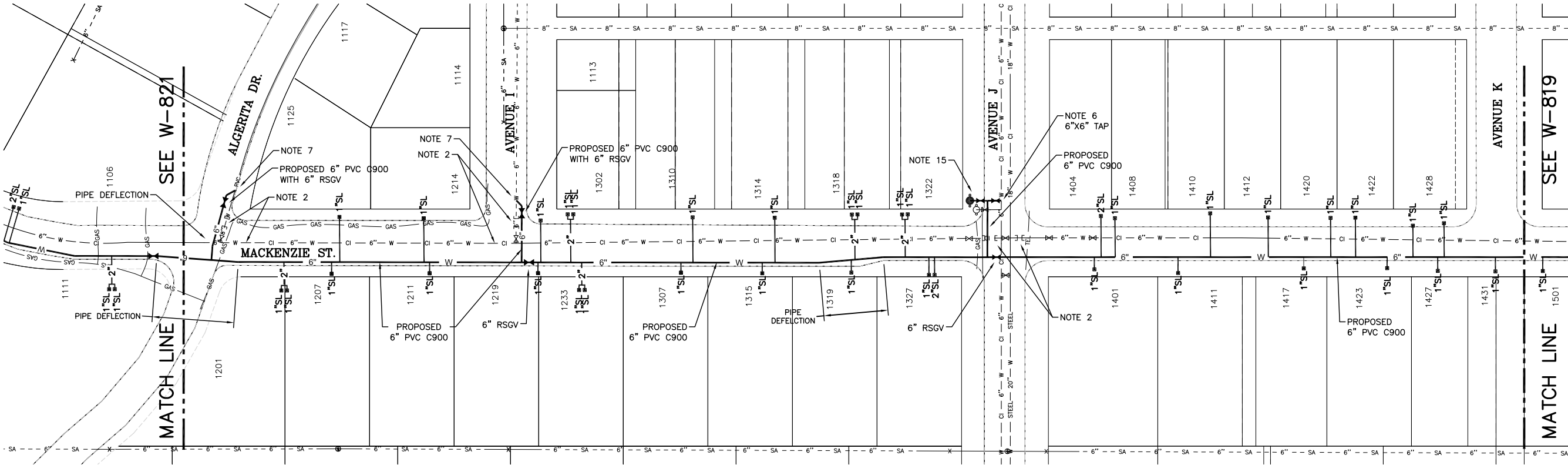
2016 WATER LINE IMPROVEMENTS

KNICKERBOCKER RD. FROM
BEATY RD. TO THE SOUTHWEST

The Seal appearing on this
document was authorized
by Russell J. Pehl, P.E. 104755
on November 4, 2016



W-816



The Seal appearing on this document was authorized by Russell J. Pehl, P.E. 104756 on: **November 4, 2016**

Russell J. Pehl

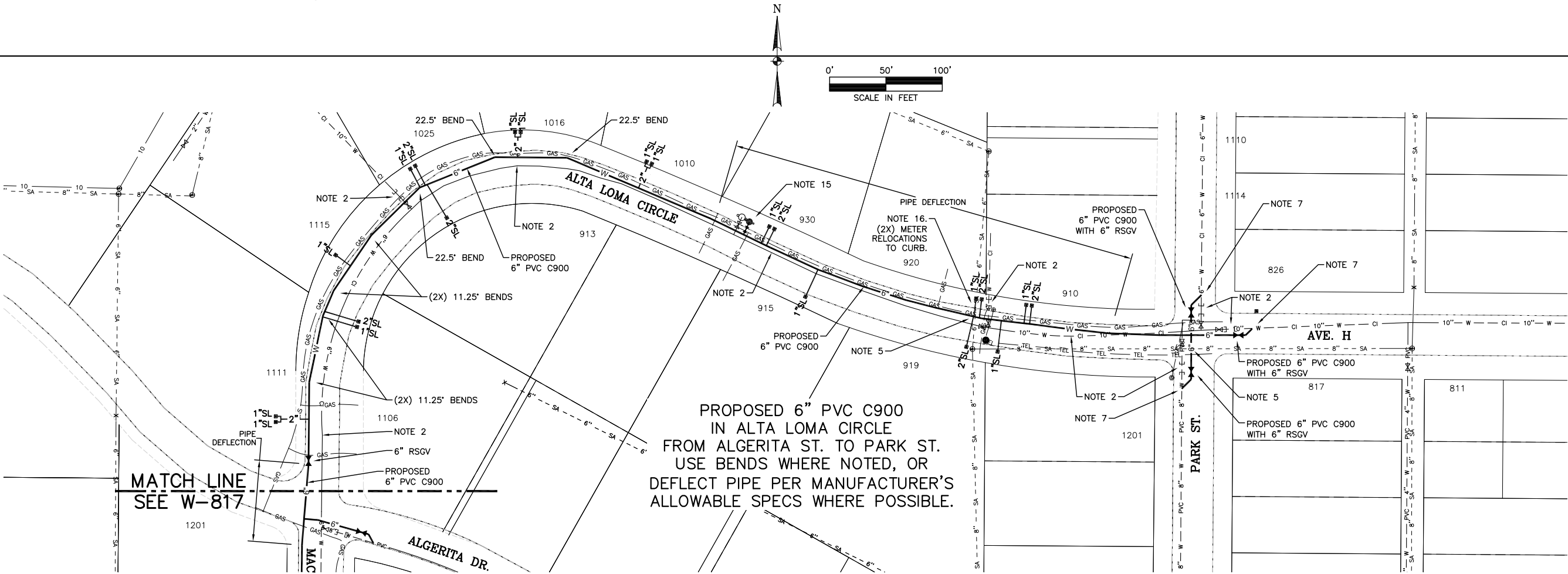
2016 WATER LINE IMPROVEMENTS

MACKENZIE ST.
FROM ALGERITA DR. TO AVENUE K



ENGINEERING
SERVICES
DEPARTMENT

DRAWN BY:	MT
CHECKED BY:	RP
HORIZONTAL SCALE:	1"=100'
VERTICAL SCALE:	N/A
JOB NUMBER:	2016-04-240
DATE:	NOVEMBER 2016



DRAWN BY:	MT
CHECKED BY:	RP
HORIZONTAL SCALE:	1"=100'
VERTICAL SCALE:	N/A
JOB NUMBER:	2016-04-240
DATE:	NOVEMBER 2016

ENGINEERING
SERVICES
DEPARTMENT

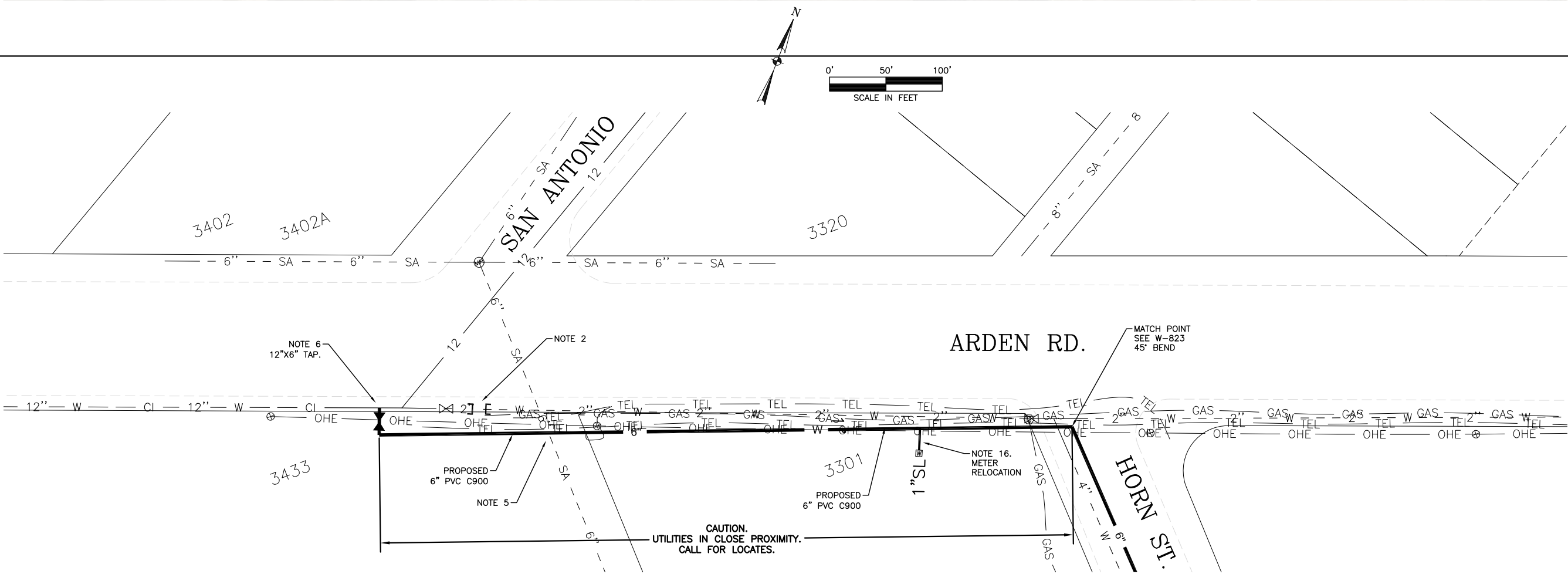
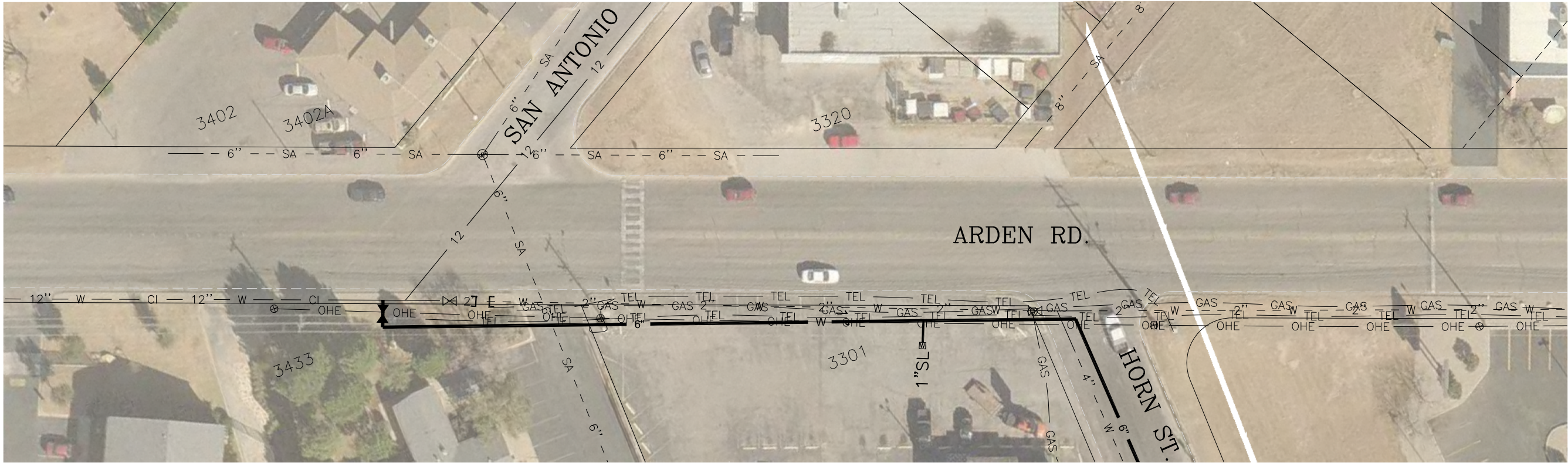


2016 WATER LINE IMPROVEMENTS

ALTA LOMA CIRCLE
FROM ALGERITA DR. TO PARK ST.


The Seal appearing on this document was authorized by Russell J. Pehl, P.E. 104755 on November 4, 2016

Russell J. Pehl




DRAWN BY:	MT
CHECKED BY:	RP
HORIZONTAL SCALE:	1"=50'
VERTICAL SCALE:	N/A
JOB NUMBER:	2016-04-240
DATE:	NOVEMBER 2016

ENGINEERING
SERVICES
DEPARTMENT

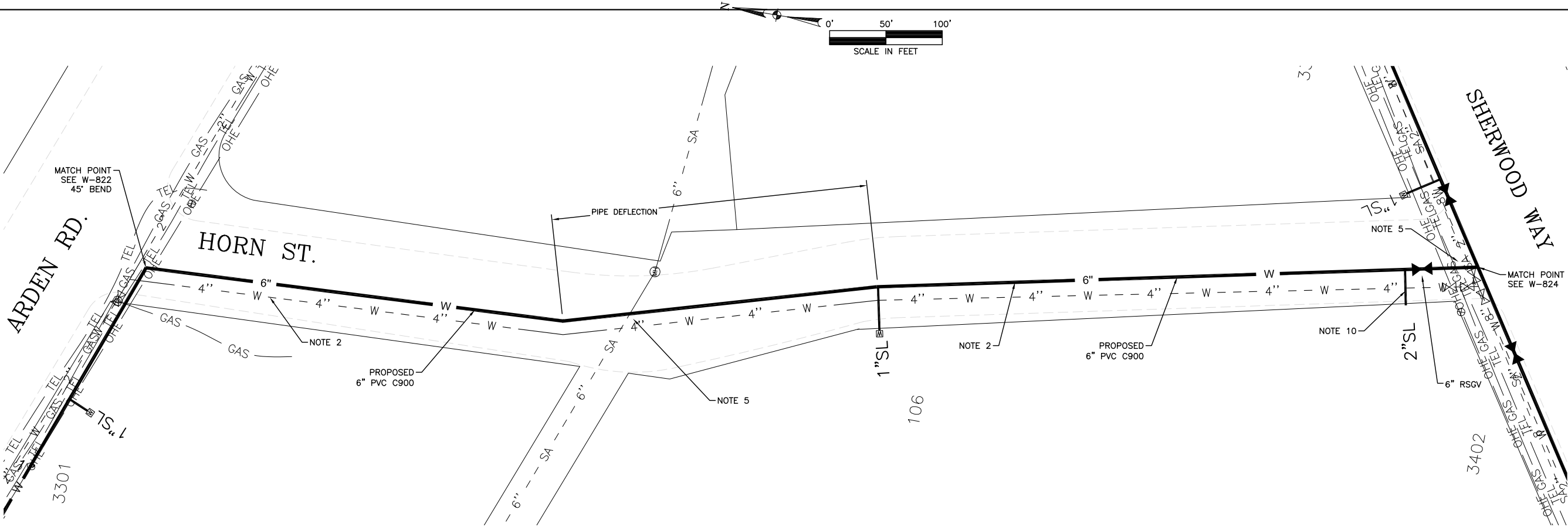
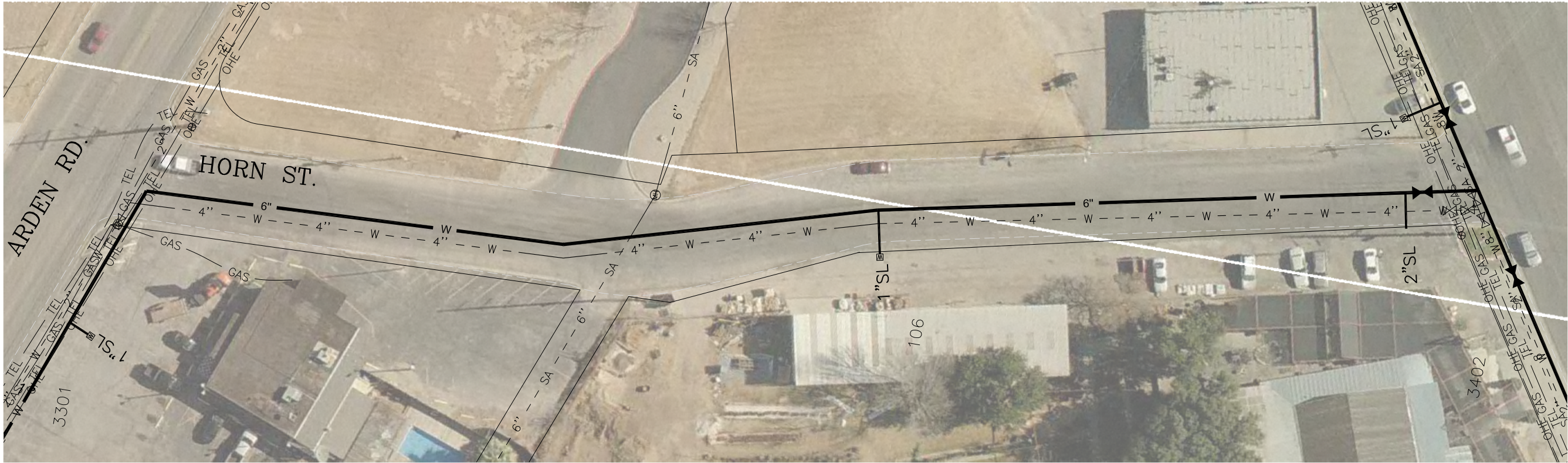


2016 WATER LINE IMPROVEMENTS
ARDEN ROAD FROM SAN ANTONIO ST. TO HORN ST.

The Seal appearing on this document was authorized by Russell J. Pehl, P.E. 104755 on: **November 4, 2016**



Russell J. Pehl



ENGINEERING
SERVICES
DEPARTMENT



2016 WATER LINE IMPROVEMENTS

HORN ST. FROM
ARDEN RD. TO SHERWOOD WAY

The Seal appearing on this
document was authorized
by Russell J. Pehl, P.E. 104755
on: **November 4, 2016**



W-823

DRAWN BY:

CHECKED BY:

HORIZONTAL SCALE:

VERTICAL SCALE:

JOB NUMBER:

DATE:

MT

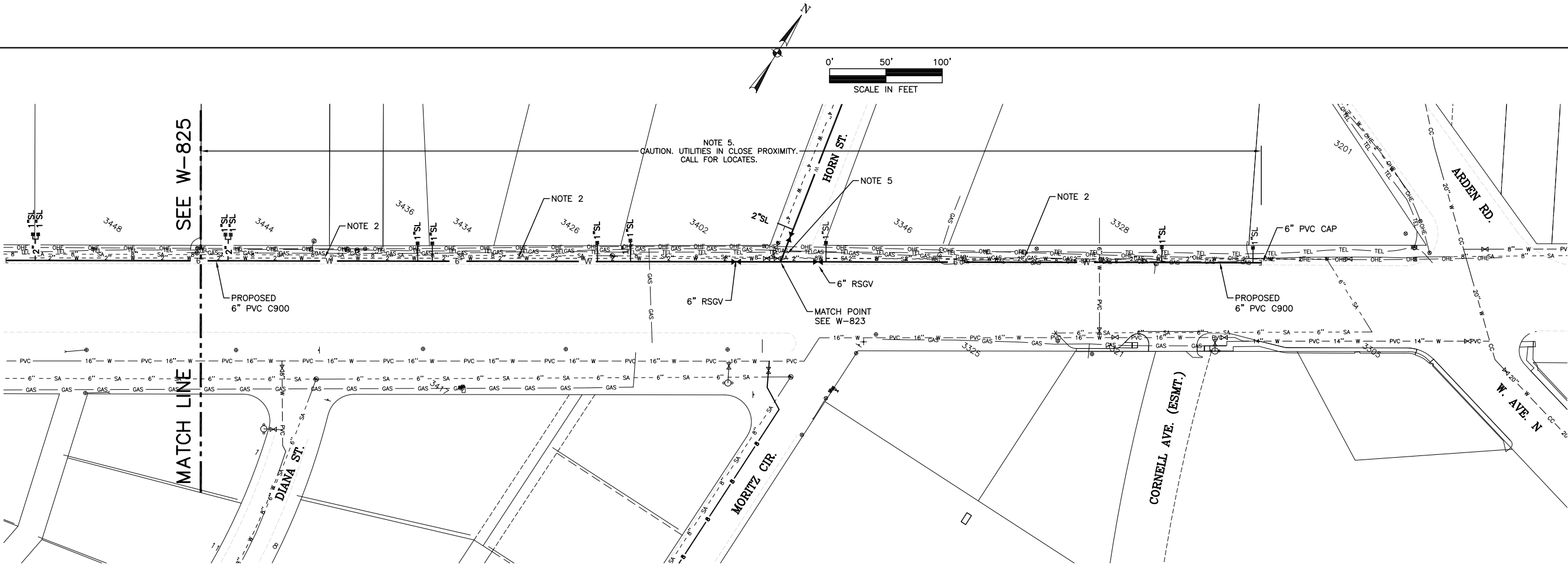
RP

1"=50'

N/A


2016-04-240

NOVEMBER 2016



DRAWN BY:	MT
CHECKED BY:	RP
HORIZONTAL SCALE:	1"=100'
VERTICAL SCALE:	N/A
JOB NUMBER:	2016-04-240
DATE:	NOVEMBER 2016


ENGINEERING
SERVICES
DEPARTMENT



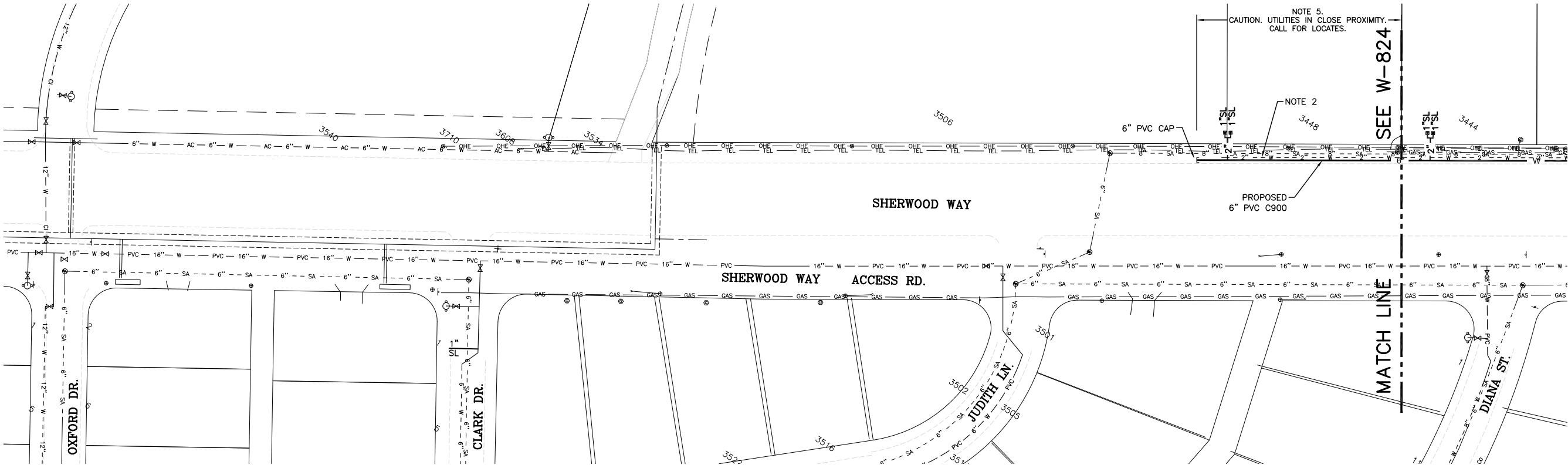
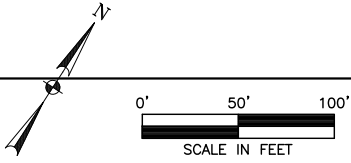
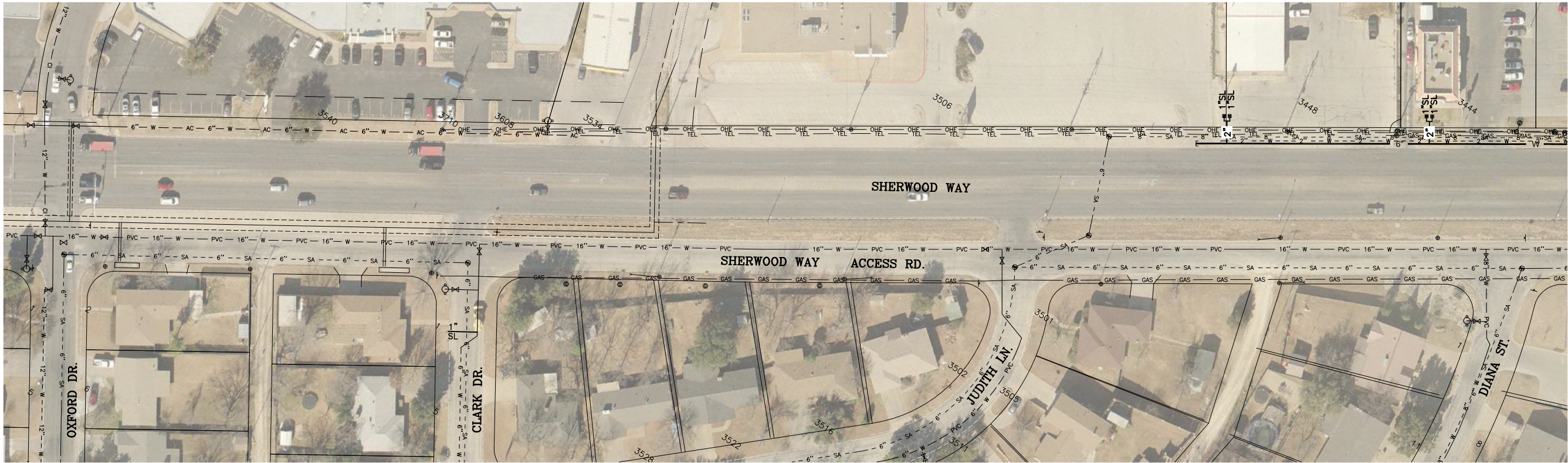
2016 WATER LINE IMPROVEMENTS

SHERWOOD WAY
FROM ARDEN RD. TO DIANA ST.

The Seal appearing on this document was authorized by Russell J. Pehl, P.E. 104755 on November 4, 2016



Russell J. Pehl



DRAWN BY:	MT
CHECKED BY:	RP
HORIZONTAL SCALE:	1"=100'
VERTICAL SCALE:	N/A
JOB NUMBER:	2016-04-240
DATE:	NOVEMBER 2016


ENGINEERING
SERVICES
DEPARTMENT



2016 WATER LINE IMPROVEMENTS

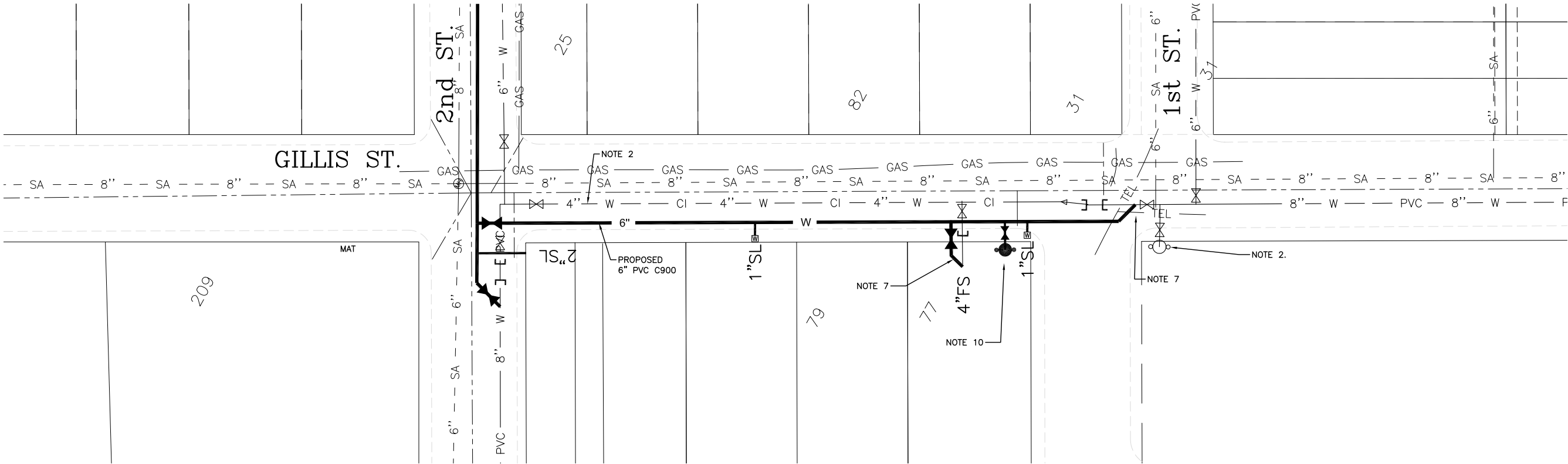
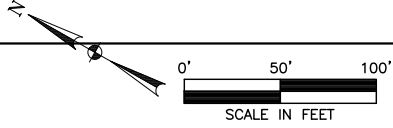
SHERWOOD WAY
FROM DIANA ST. TO CLARK ST.


The Seal appearing on this document was authorized by Russell J. Pehl, P.E. 104755 on: November 4, 2016

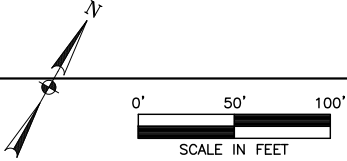
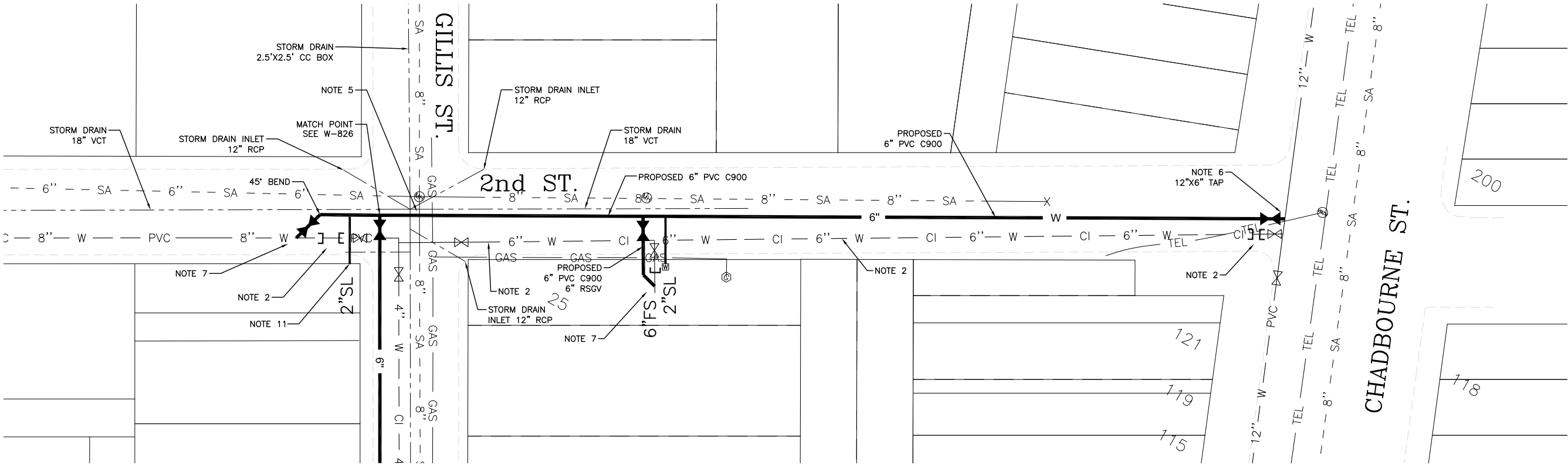
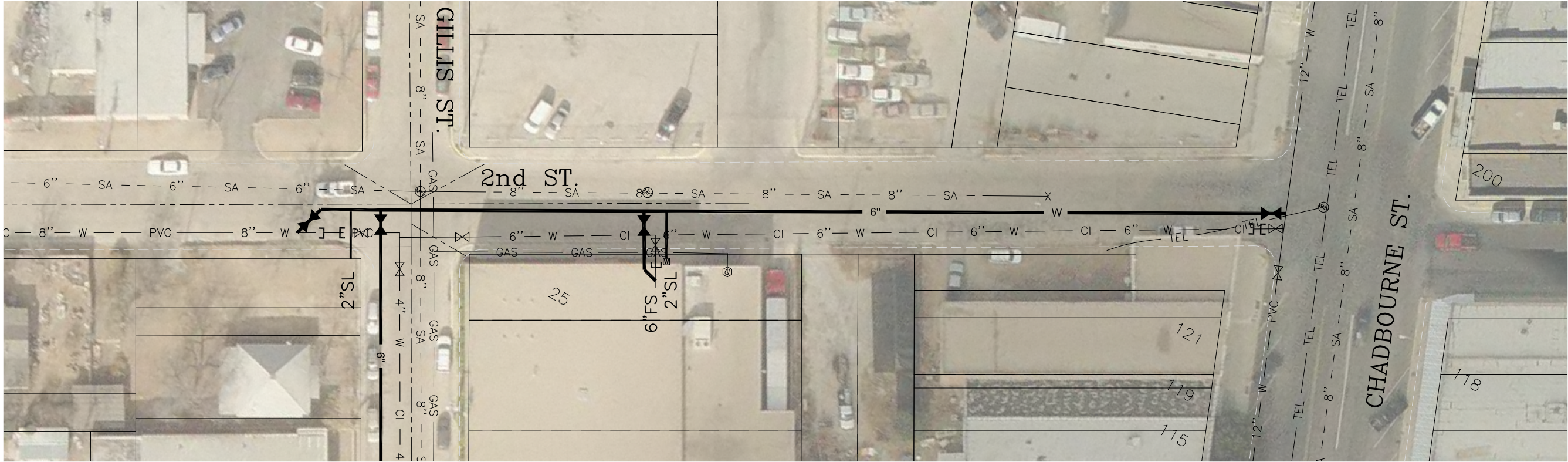




Russell J. Pehl

W-825



W-826	2016 WATER LINE IMPROVEMENTS	 ENGINEERING SERVICES DEPARTMENT	DRAWN BY:	MT	
			CHECKED BY:	RP	
	GILLIS ST. FROM 1ST TO 2ND ST.		HORIZONTAL SCALE:	1"=50'	
			VERTICAL SCALE:	N/A	
			JOB NUMBER:	2016-04-240	
			DATE:	NOVEMBER 2016	



 The Seal appearing on this document was authorized by Russell J. Pehl, P.E. 104755 on: November 4, 2016 <i>Russell J. Pehl</i>	2016 WATER LINE IMPROVEMENTS		 ENGINEERING SERVICES DEPARTMENT	DRAWN BY: MT	CHECKED BY: RP
	2ND ST. FROM GILLIS ST. TO CHADBOURNE ST.			HORIZONTAL SCALE: 1"=50'	VERTICAL SCALE: N/A
				JOB NUMBER: 2016-04-240	DATE: NOVEMBER 2016
W-827					