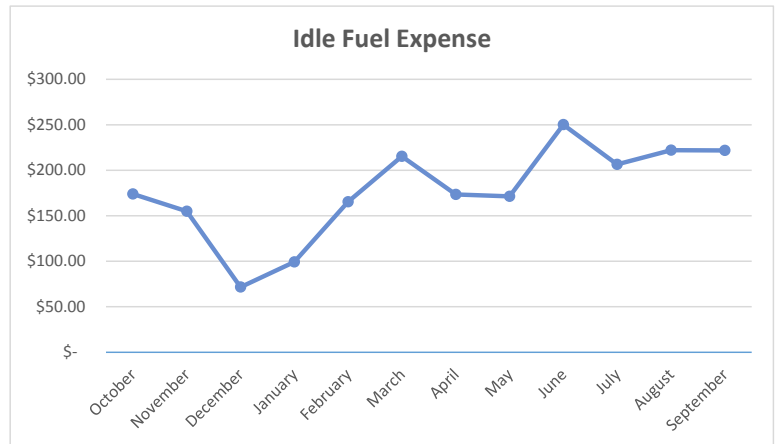
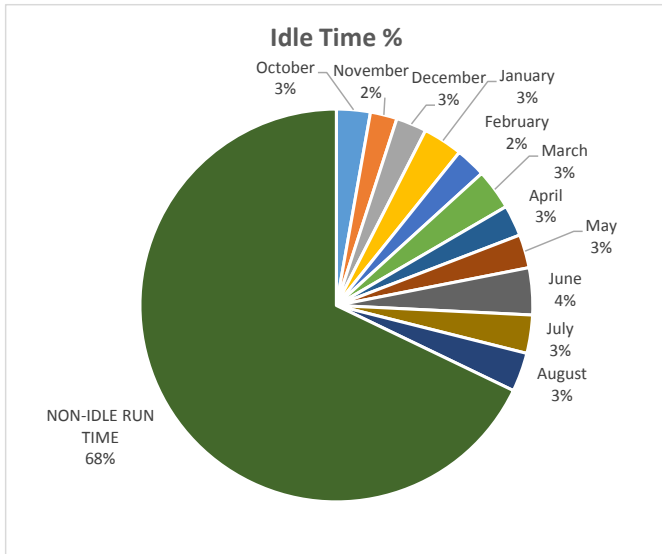
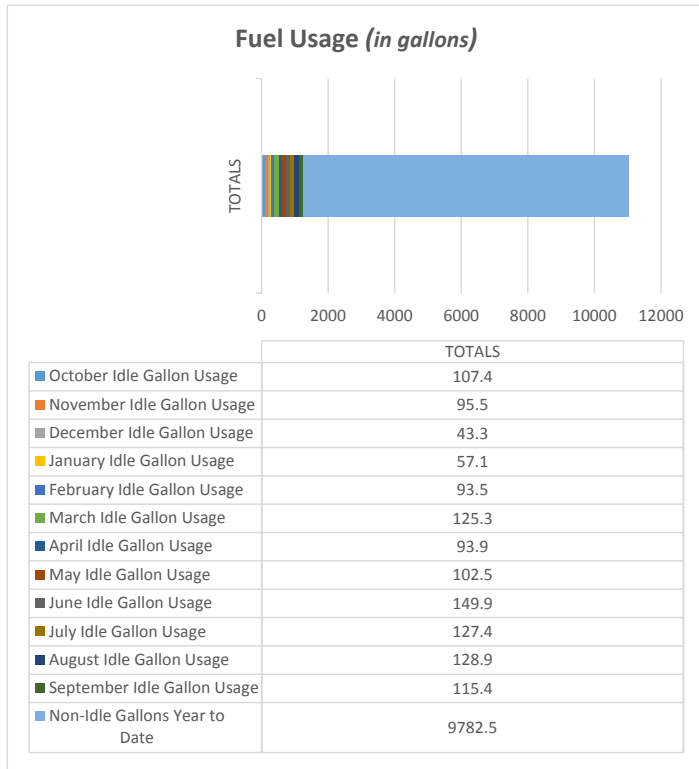
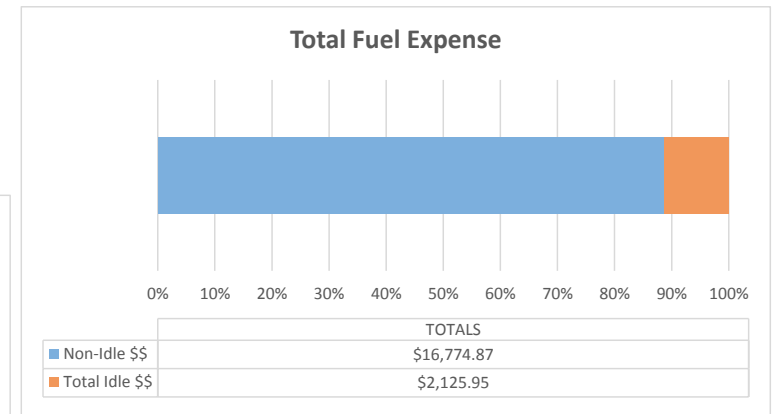


Backhoe Report

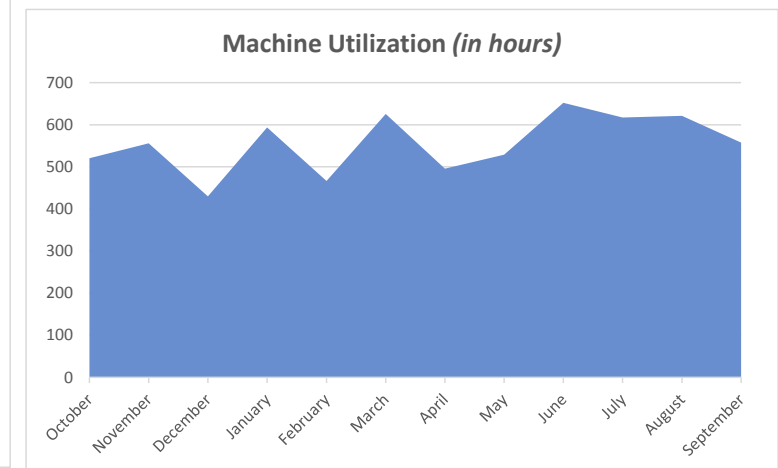
All Machines



Total Annual Idle Percentage 34.1%



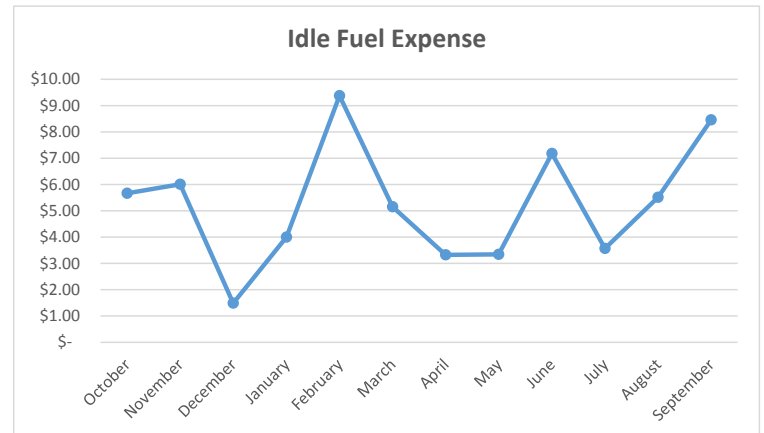
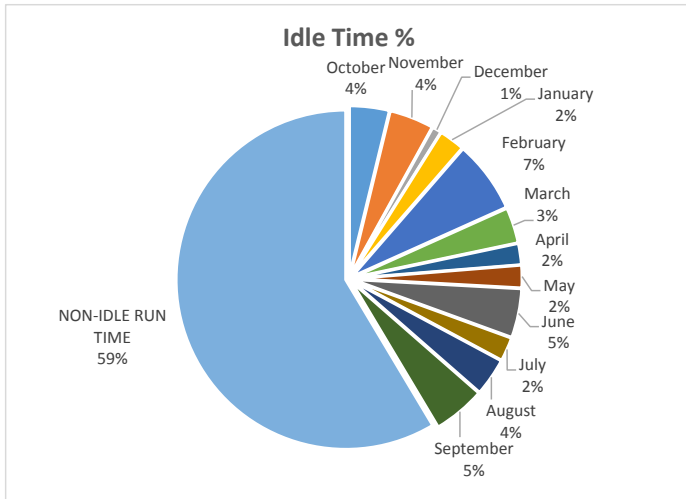
% of Fuel Expense Spent on Idle Time 11.25%



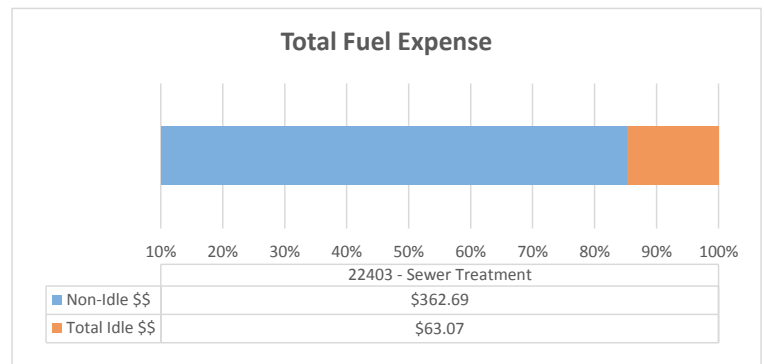
Average Machine Hours 1338.8

Backhoe Report

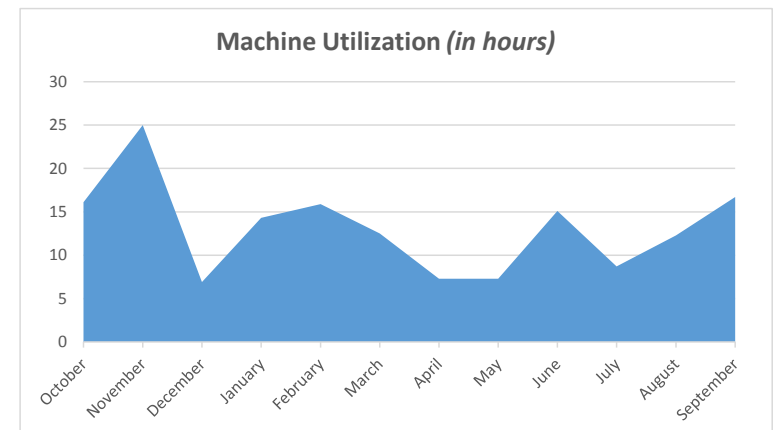
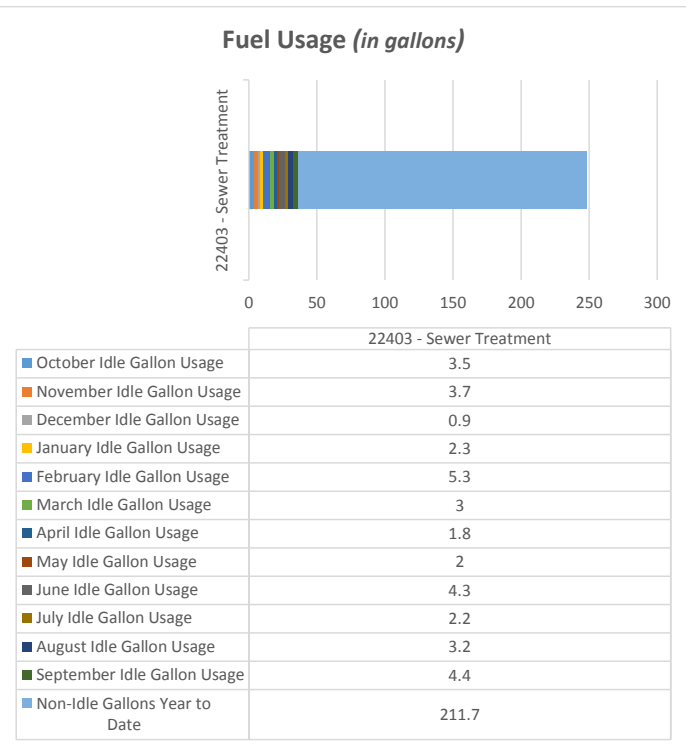
22403 - Sewer Treatment



Total Annual Idle Percentage 41.4%



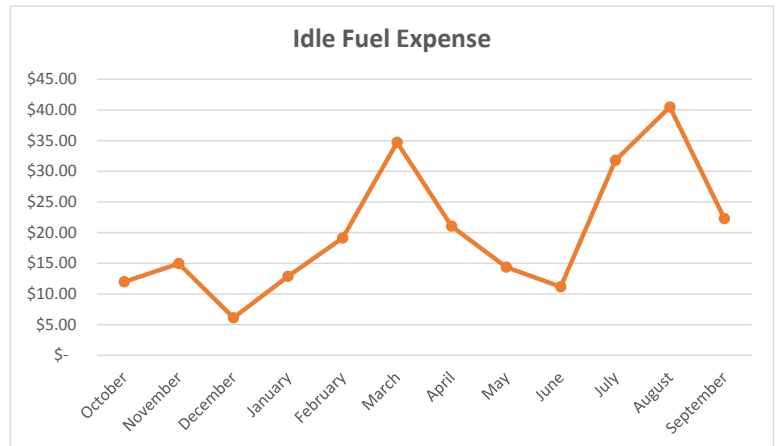
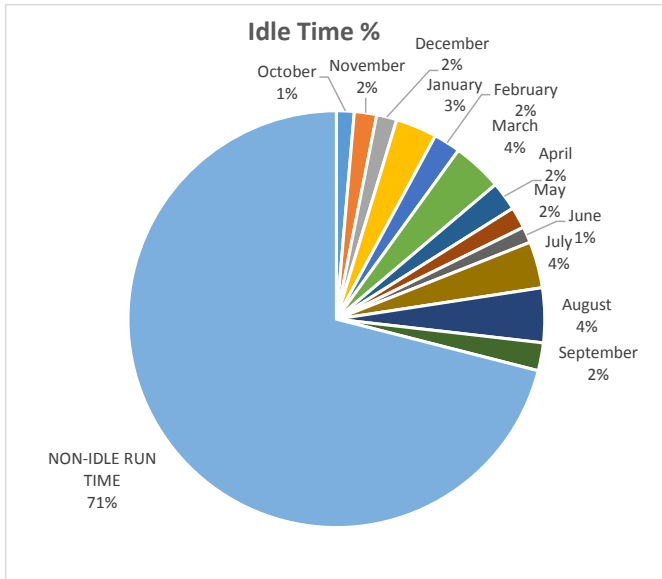
% of Fuel Expense Spent on Idle Time 14.81%



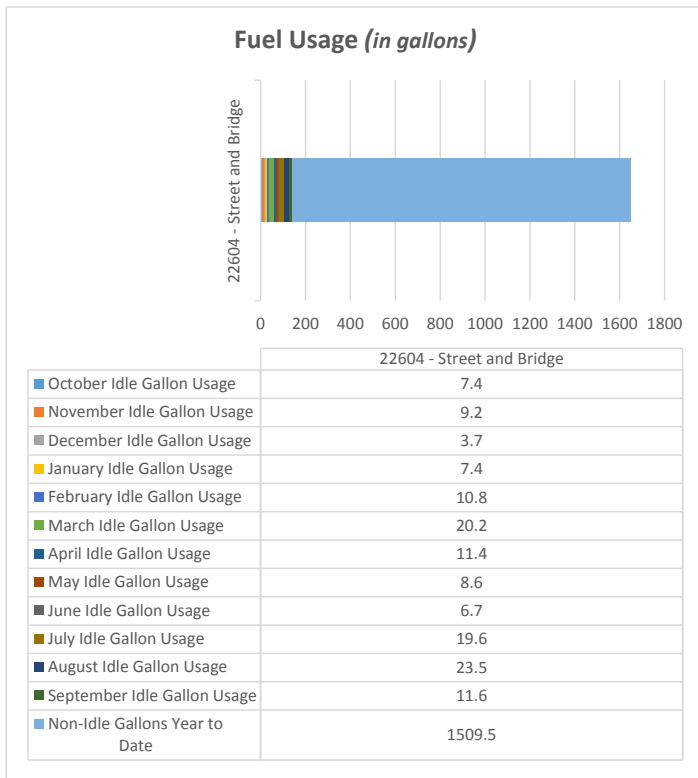
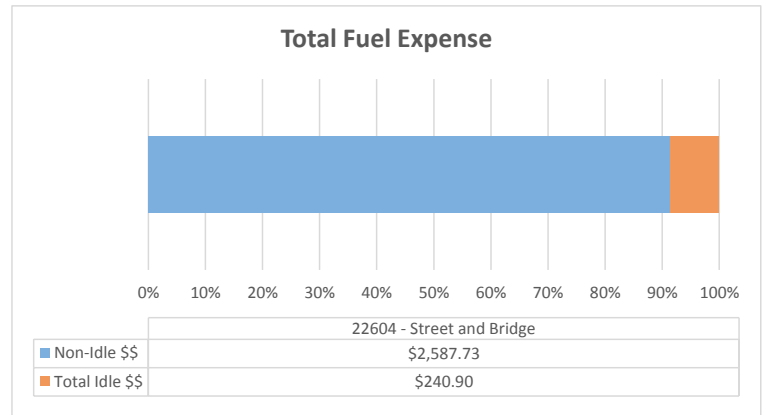
TOTAL MACHINE HOURS 770

Backhoe Report

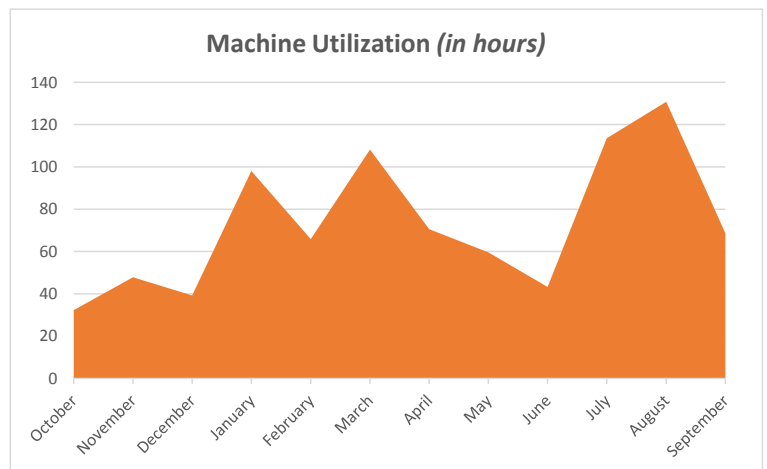
22604 - Street and Bridge



Total Annual Idle Percentage **29.0%**



% of Fuel Expense Spent on Idle Time **8.52%**

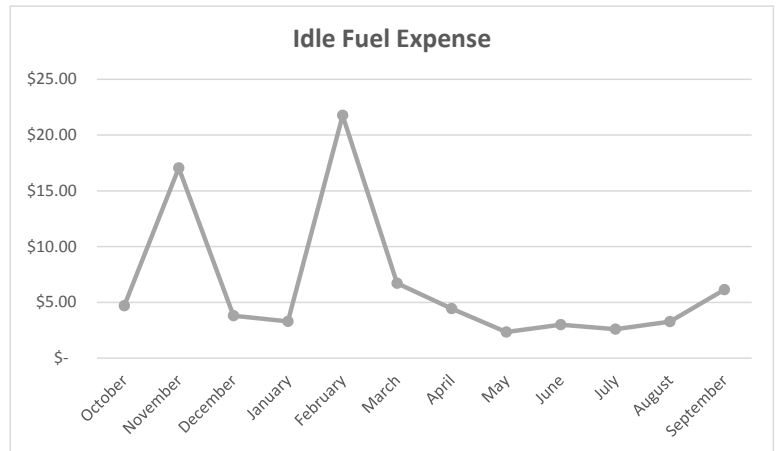
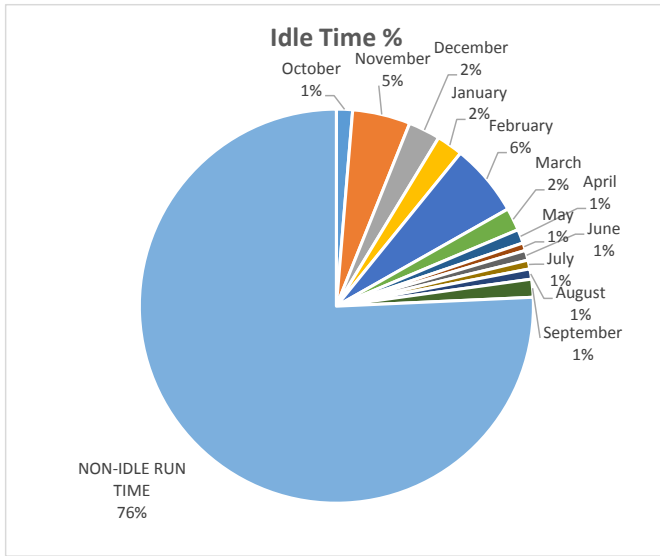


TOTAL MACHINE HOURS **1685**

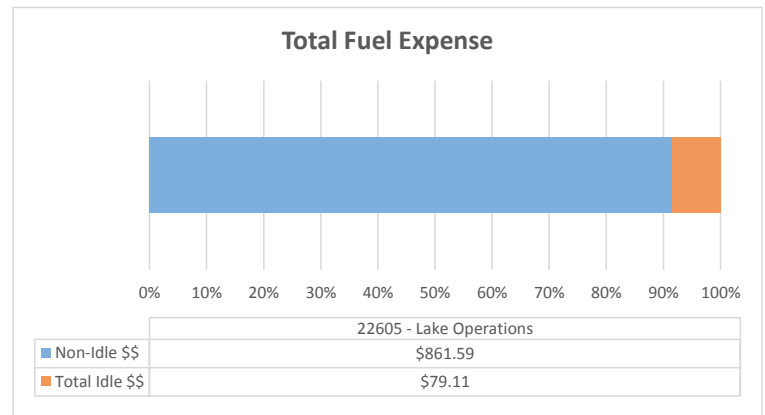
Machine Utilization: **Above Average**

Backhoe Report

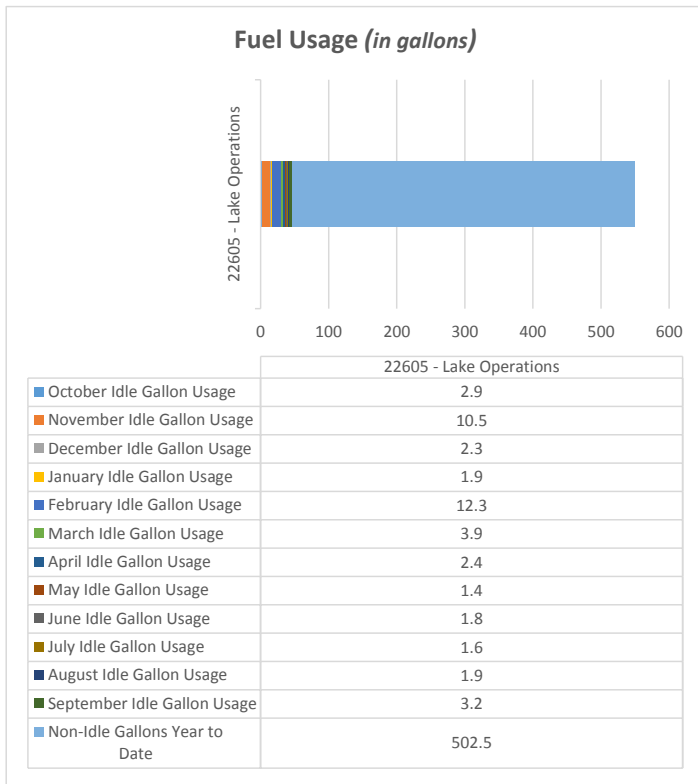
22605 - Lake Operations



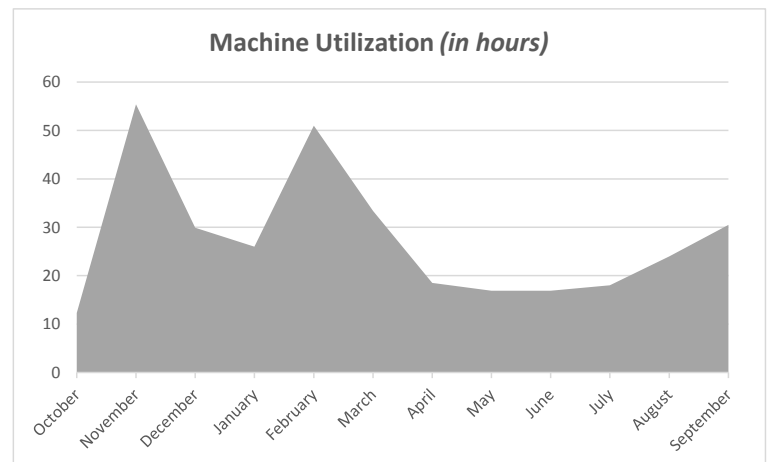
Total Annual Idle Percentage 24.3%



% of Fuel Expense Spent on Idle Time 8.41%



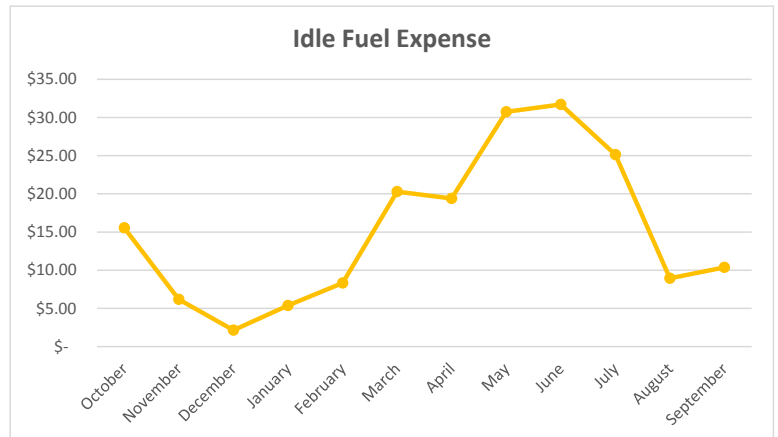
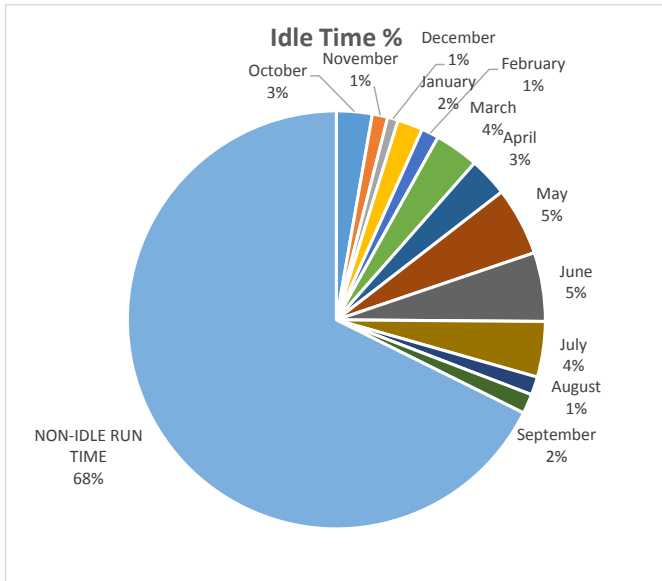
TOTAL MACHINE HOURS 1145



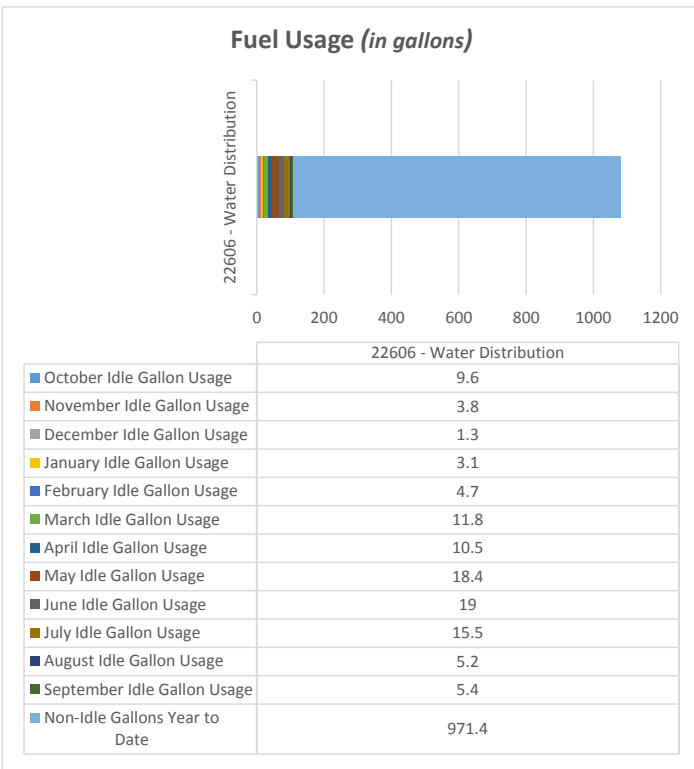
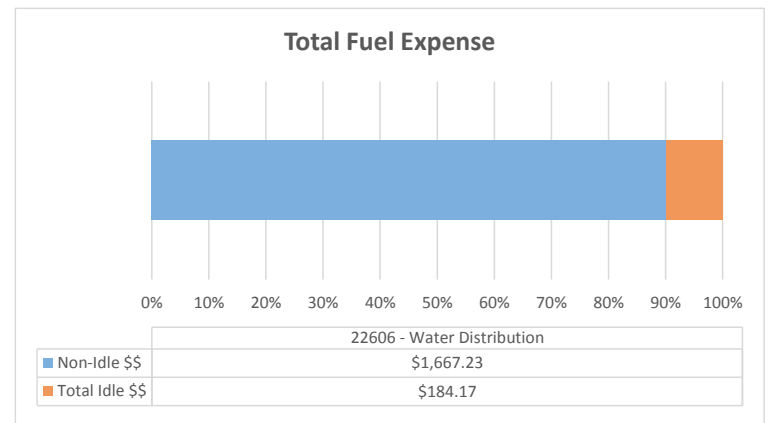
Machine Utilization: Below Average

Backhoe Report

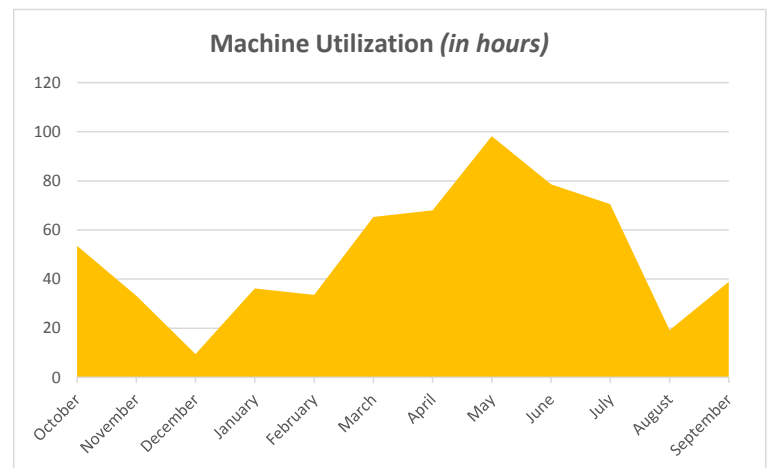
22606 - Water Distribution



Total Annual Idle Percentage 32.3%



% of Fuel Expense Spent on Idle Time 9.95%

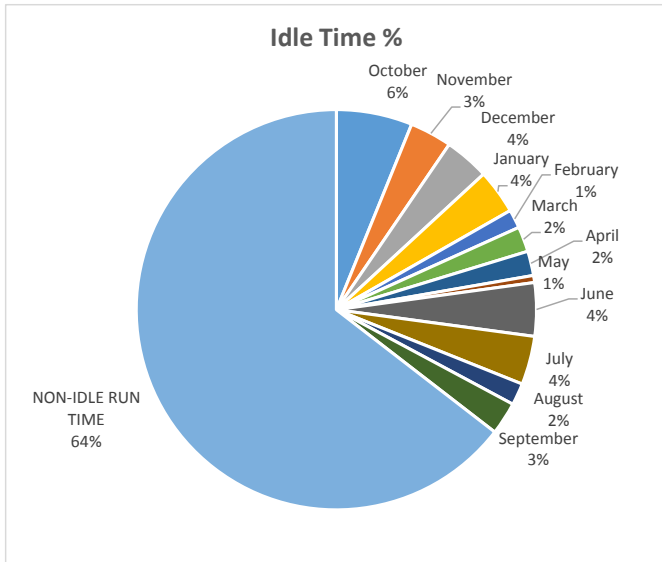


TOTAL MACHINE HOURS 1409

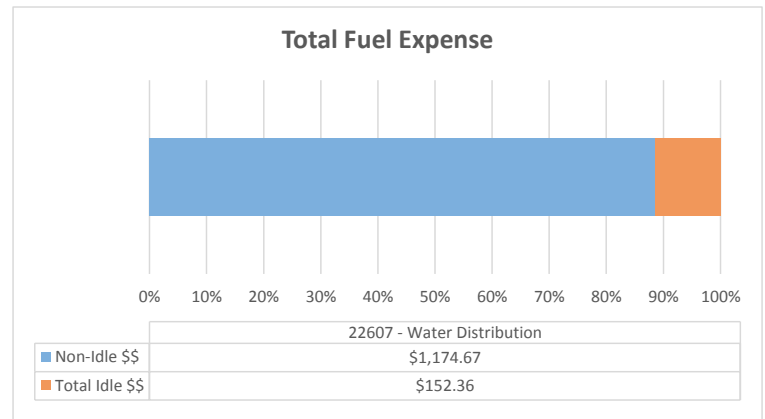
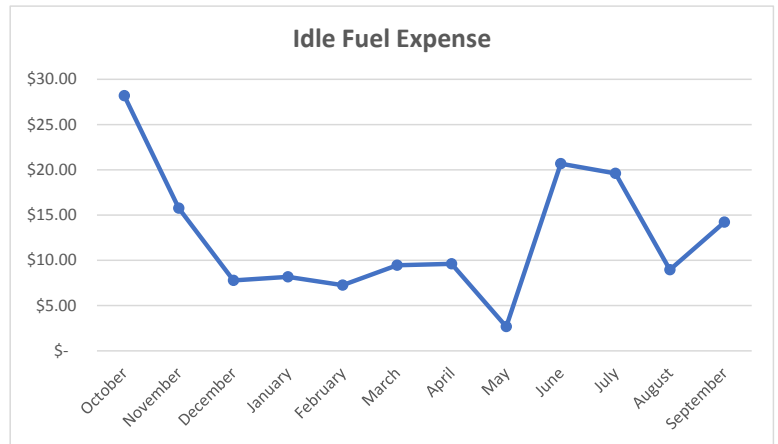
Machine Utilization: Above Average

Backhoe Report

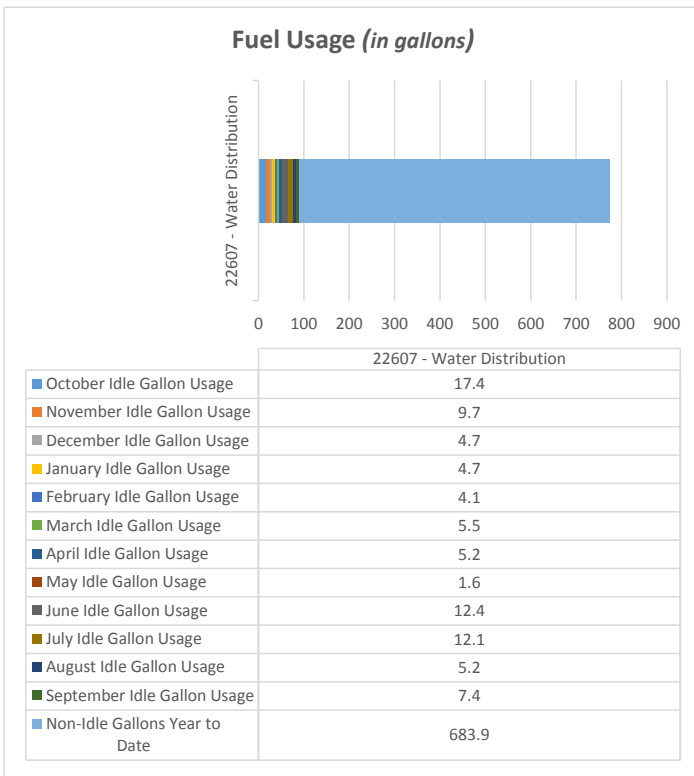
22607 - Water Distribution



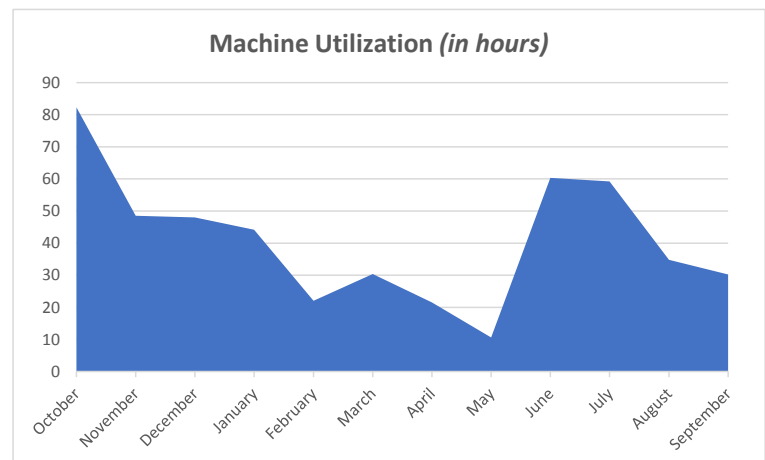
Total Annual Idle Percentage 35.5%



% of Fuel Expense Spent on Idle Time 11.48%



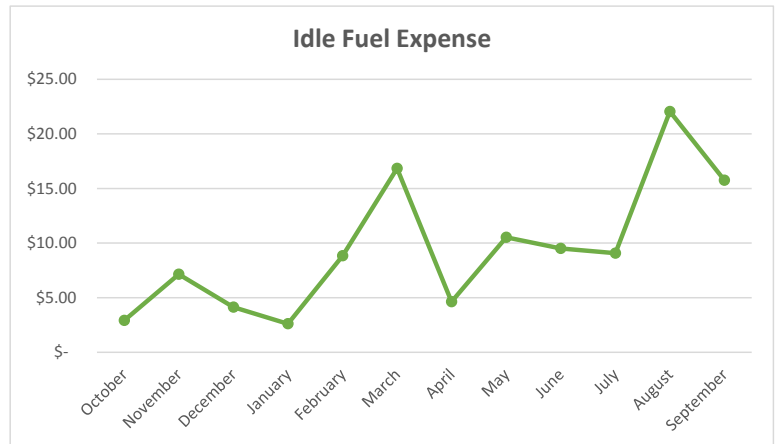
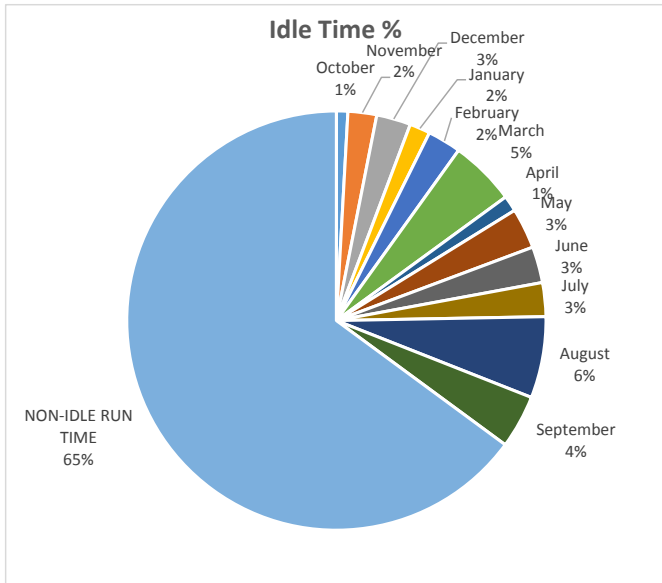
TOTAL MACHINE HOURS 1172



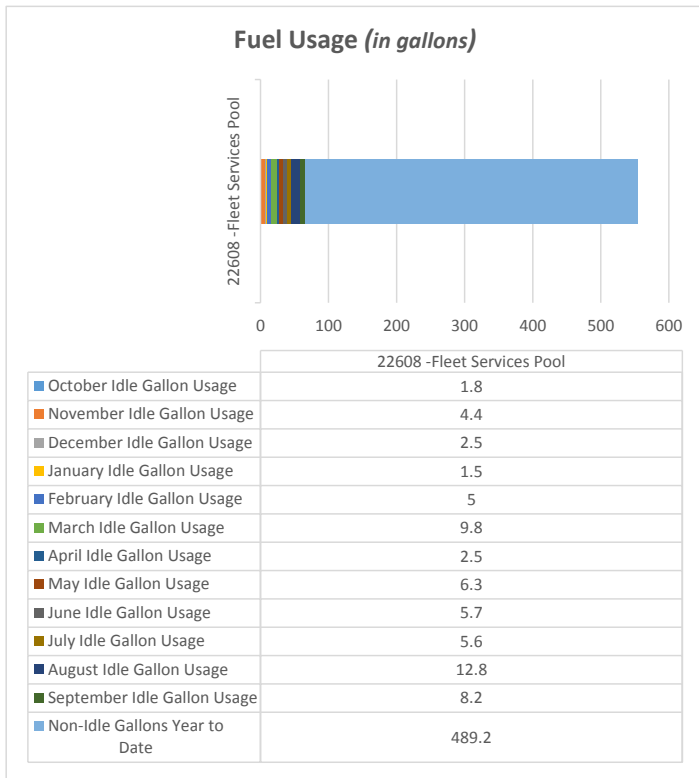
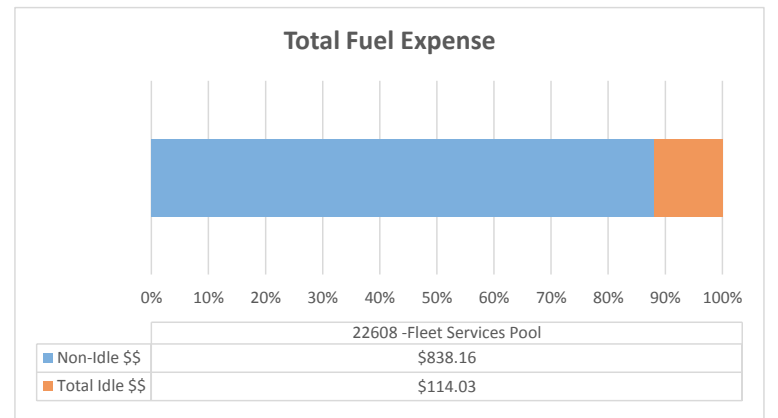
Machine Utilization: Below Average

Backhoe Report

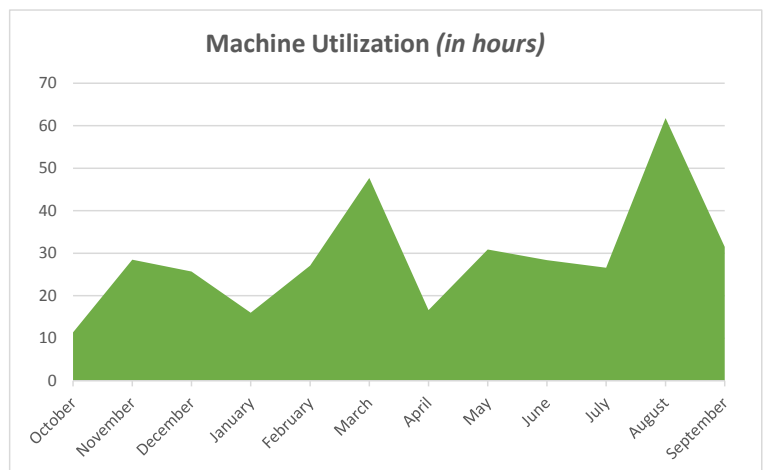
22608 -Fleet Services Pool



Total Annual Idle Percentage 35.1%



% of Fuel Expense Spent on Idle Time 11.98%

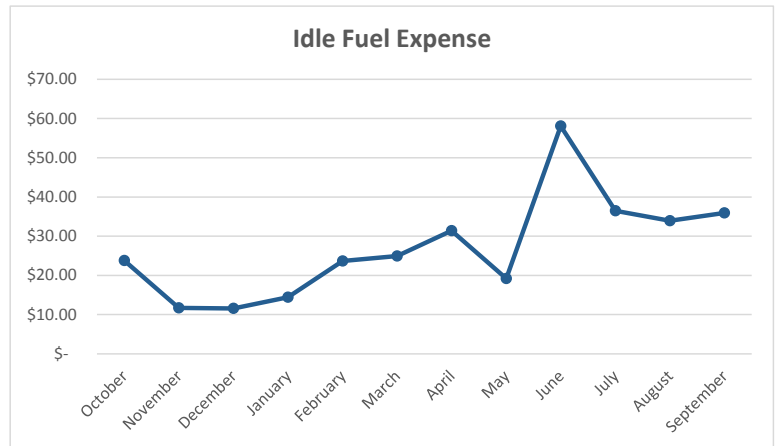
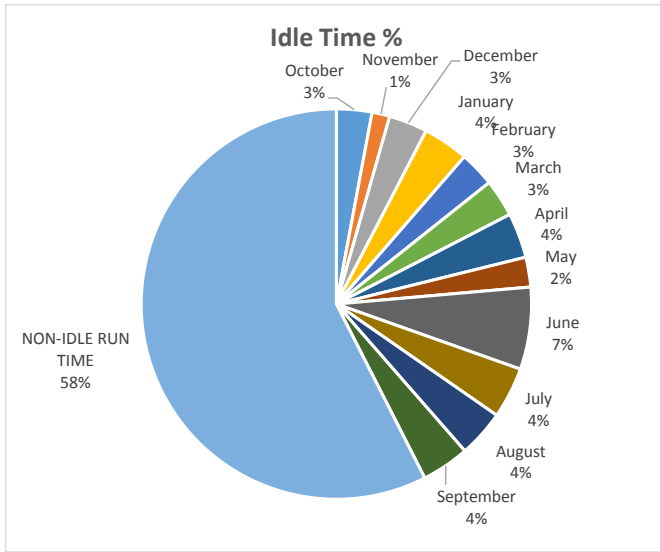


TOTAL MACHINE HOURS 1323

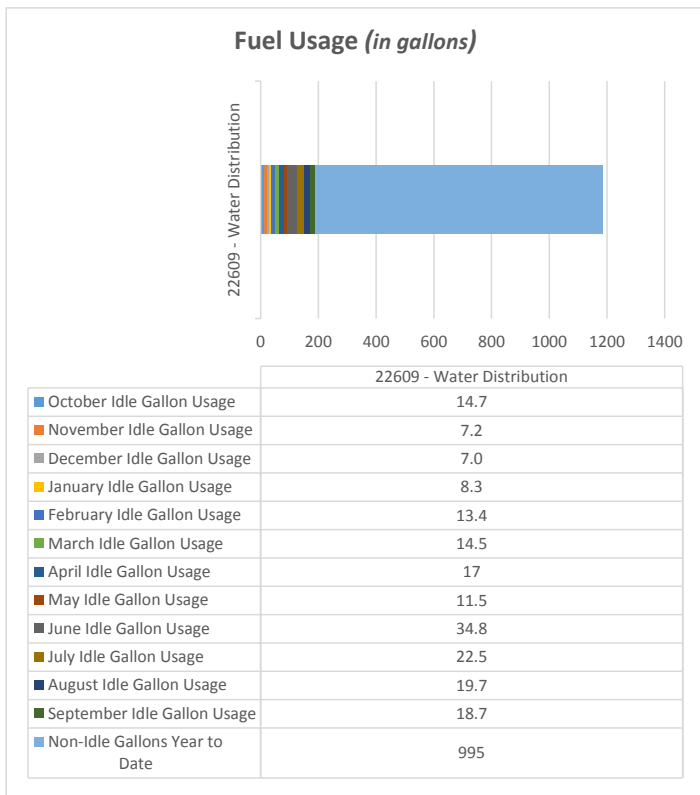
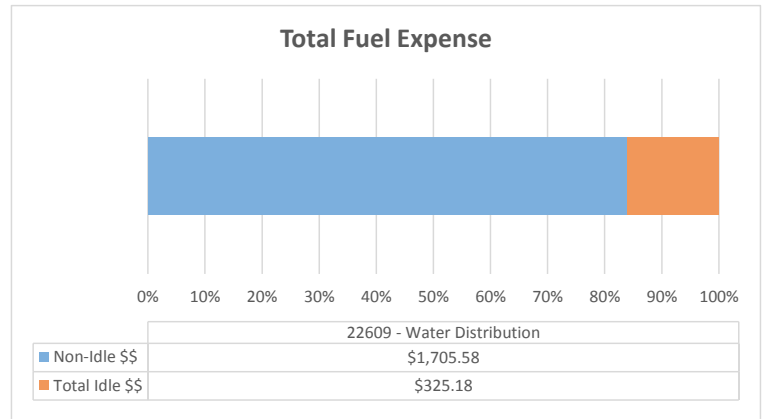
Machine Utilization: Below Average

Backhoe Report

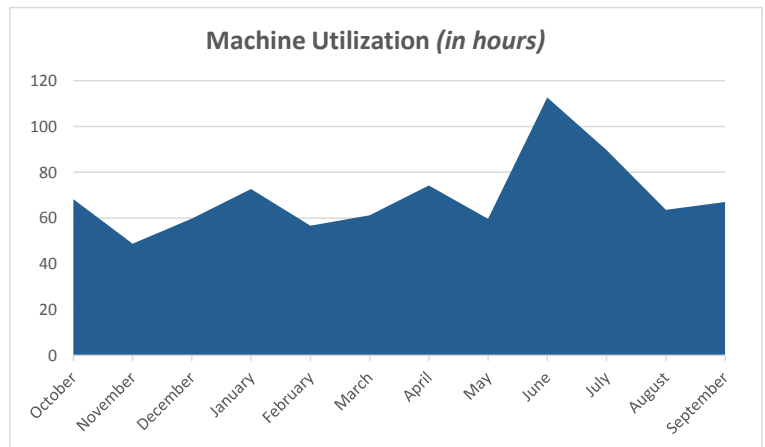
22609 - Water Distribution



Total Annual Idle Percentage **42.5%**



% of Fuel Expense Spent on Idle Time **16.01%**

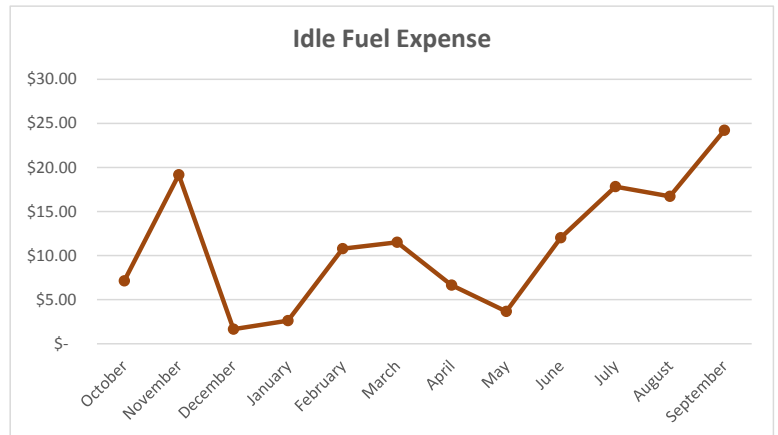
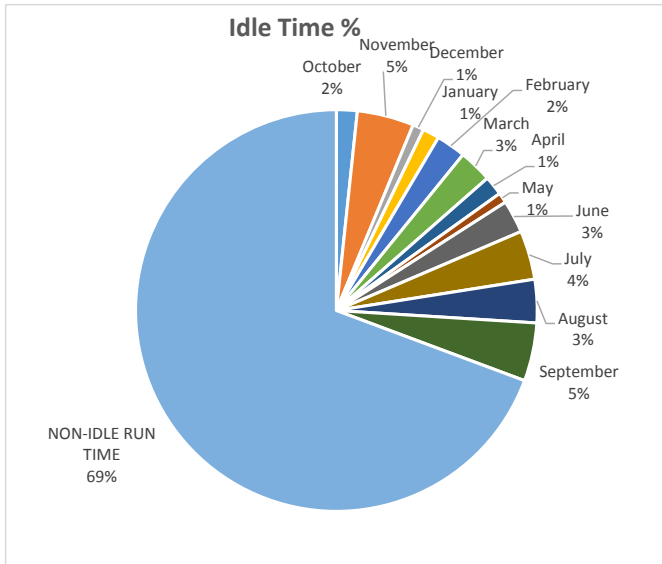


TOTAL MACHINE HOURS **2461**

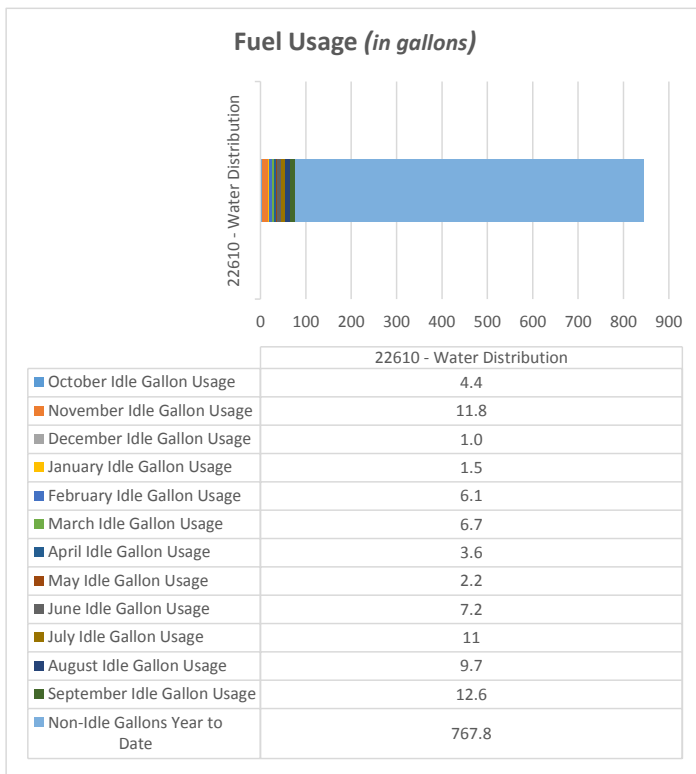
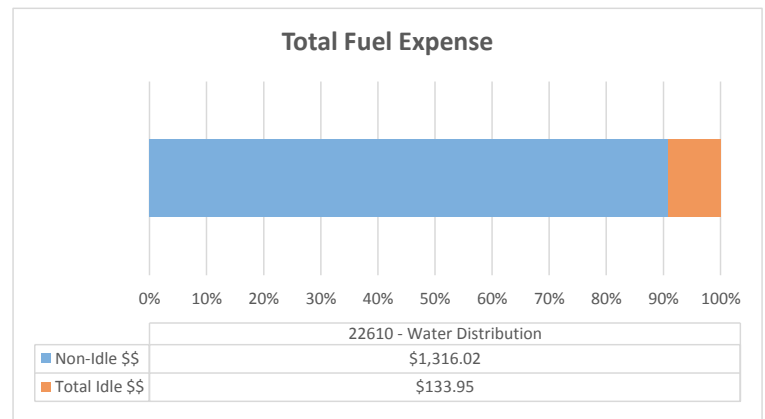
Machine Utilization: **Above Average**

Backhoe Report

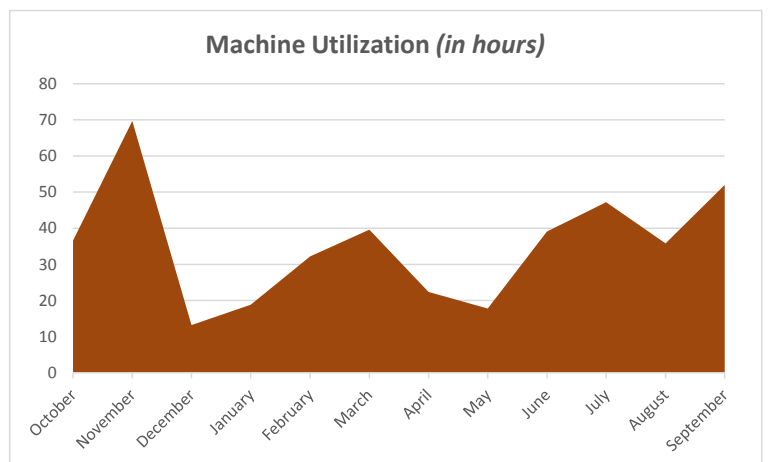
22610 - Water Distribution



Total Annual Idle Percentage 30.7%



% of Fuel Expense Spent on Idle Time 9.24%

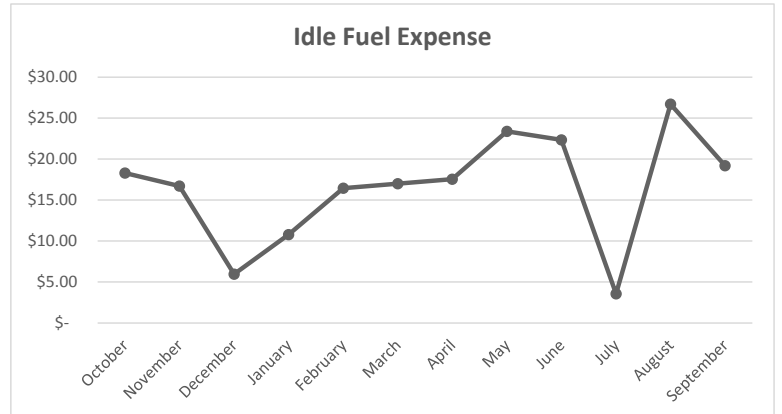
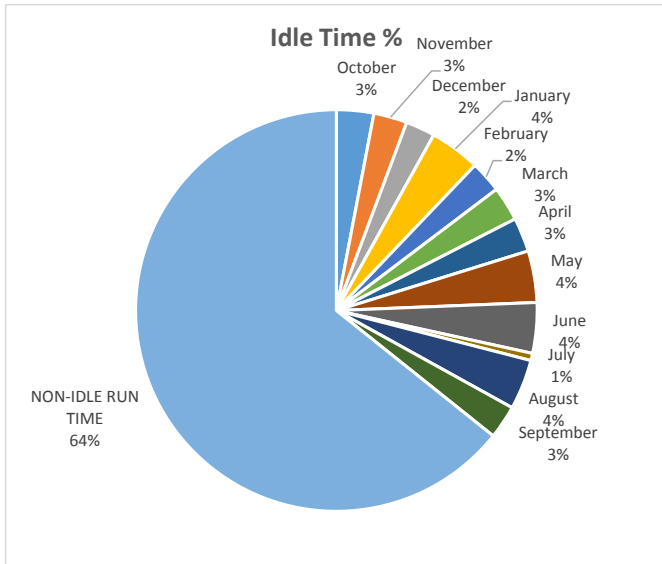


TOTAL MACHINE HOURS 1472

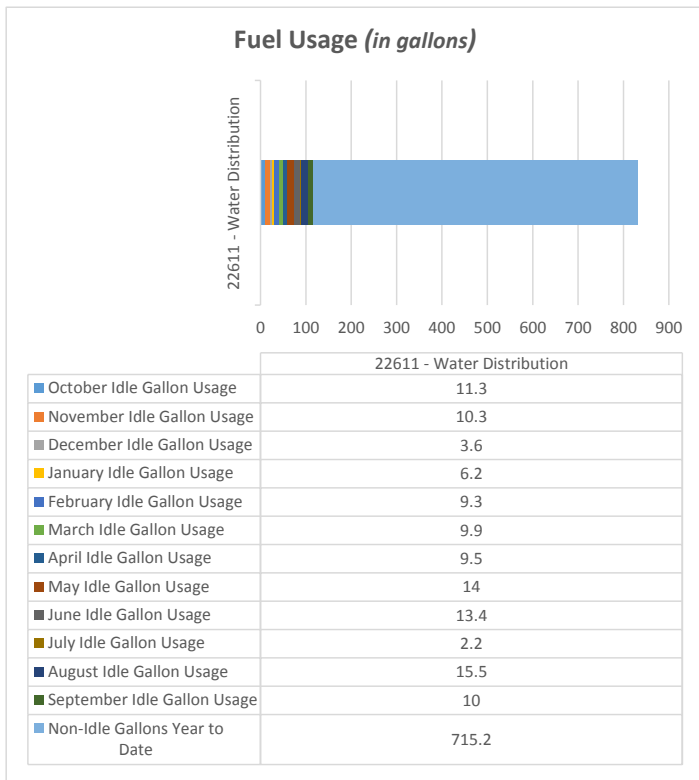
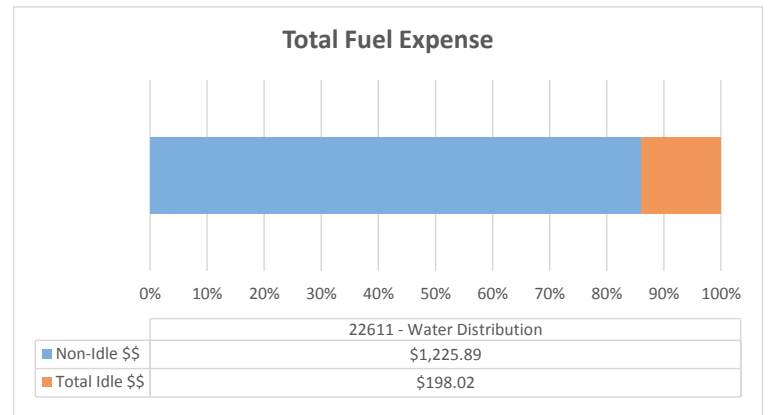
Machine Utilization: Above Average

Backhoe Report

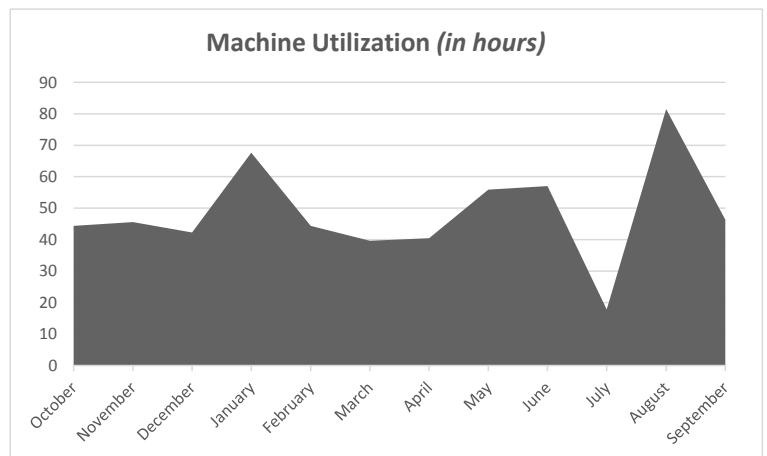
22611 - Water Distribution



Total Annual Idle Percentage 35.7%



% of Fuel Expense Spent on Idle Time 13.91%

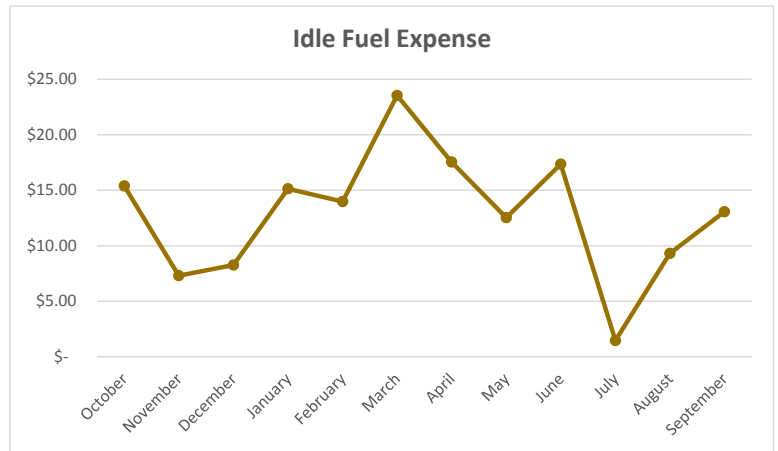
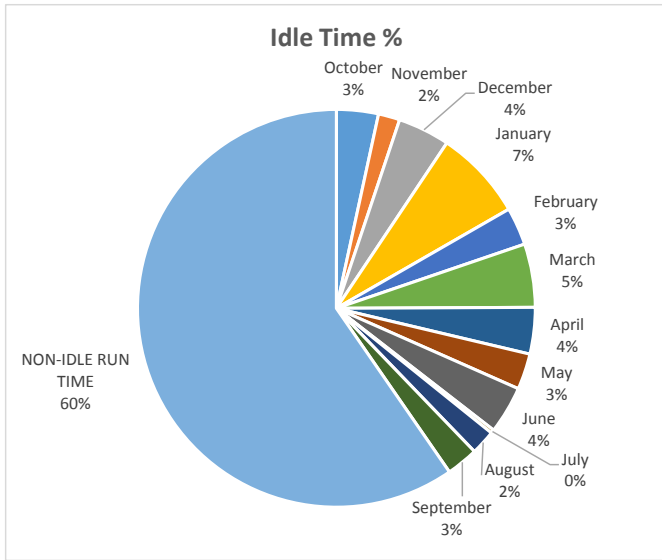


TOTAL MACHINE HOURS 1602

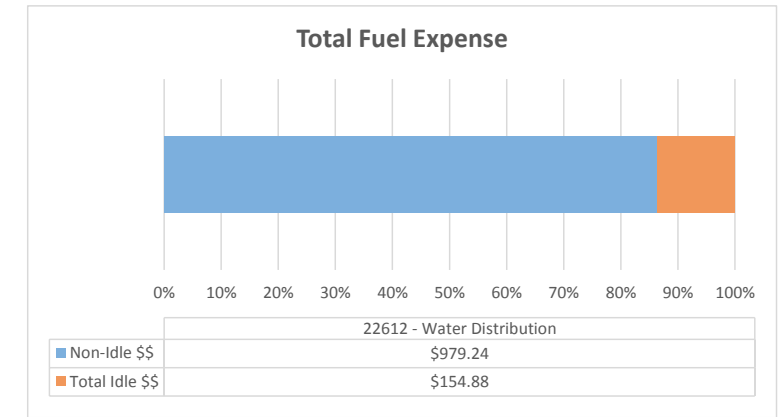
Machine Utilization: Above Average

Backhoe Report

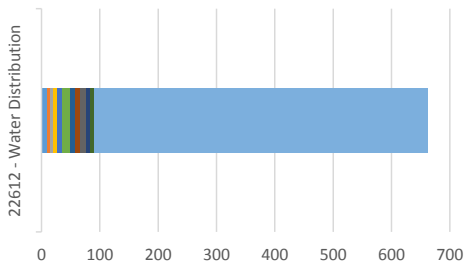
22612 - Water Distribution



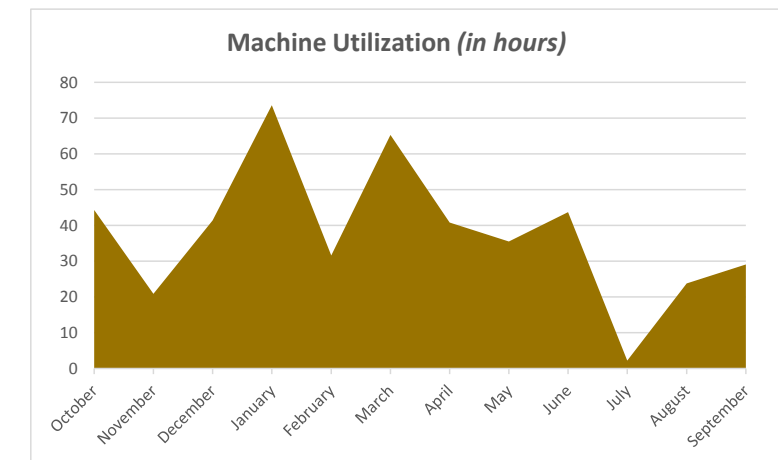
Total Annual Idle Percentage **40.4%**



Fuel Usage (in gallons)



% of Fuel Expense Spent on Idle Time **13.66%**

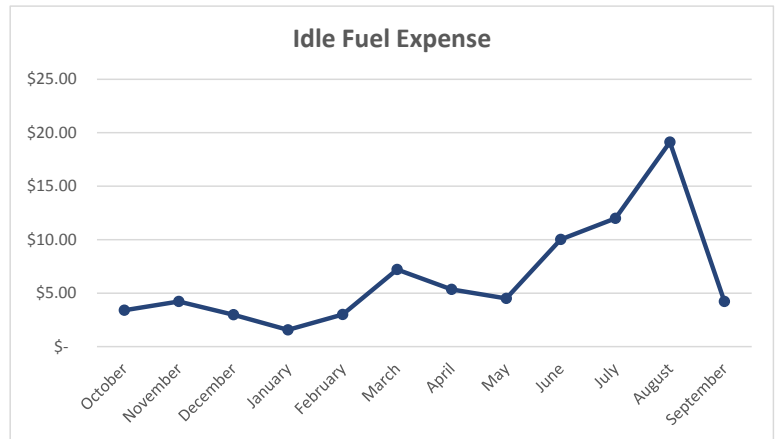
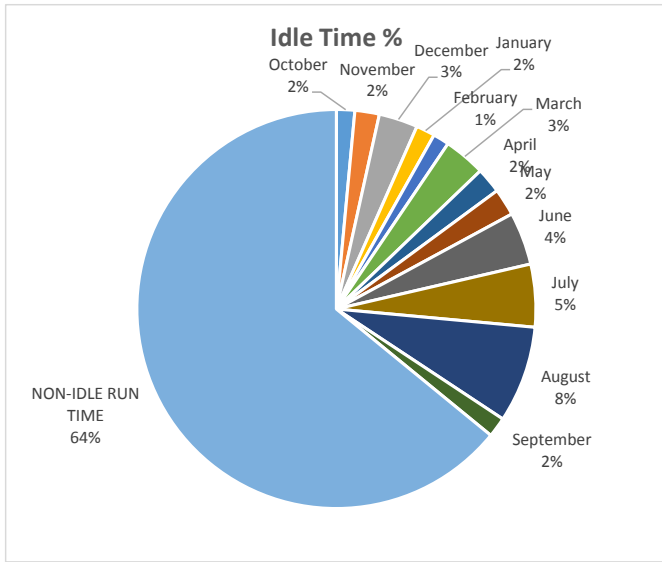


TOTAL MACHINE HOURS **1272**

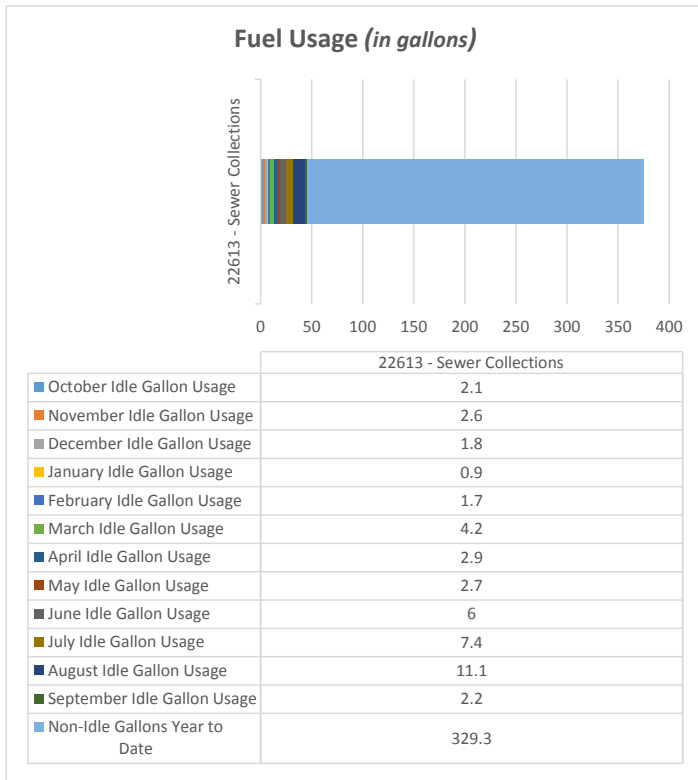
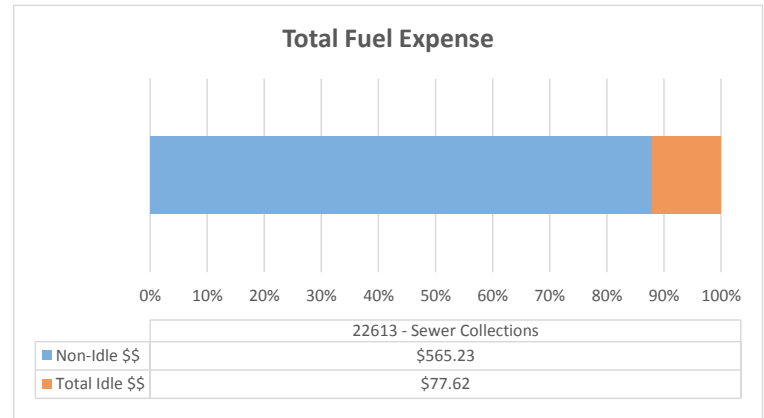
Machine Utilization: **Below Average**

Backhoe Report

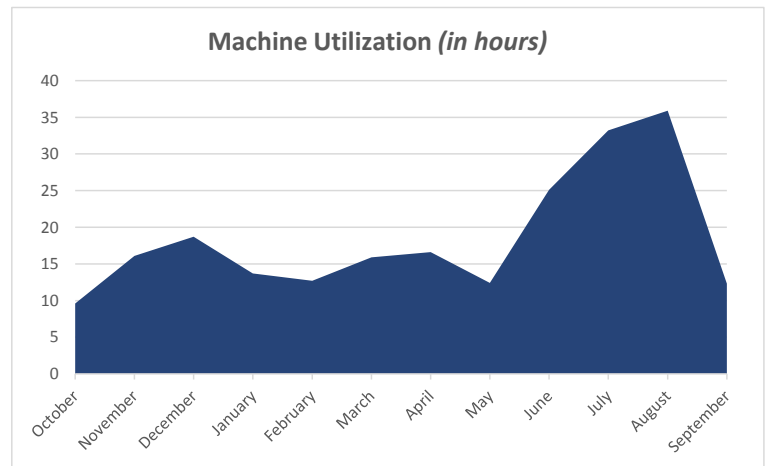
22613 - Sewer Collections



Total Annual Idle Percentage 35.9%



% of Fuel Expense Spent on Idle Time 12.07%

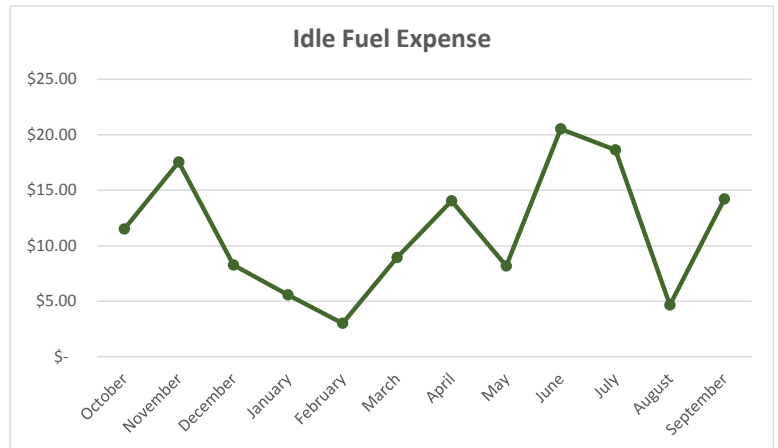
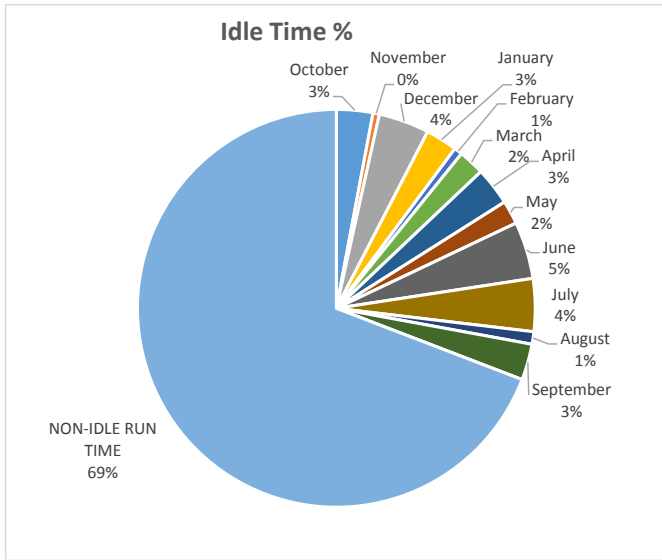


TOTAL MACHINE HOURS 695.4

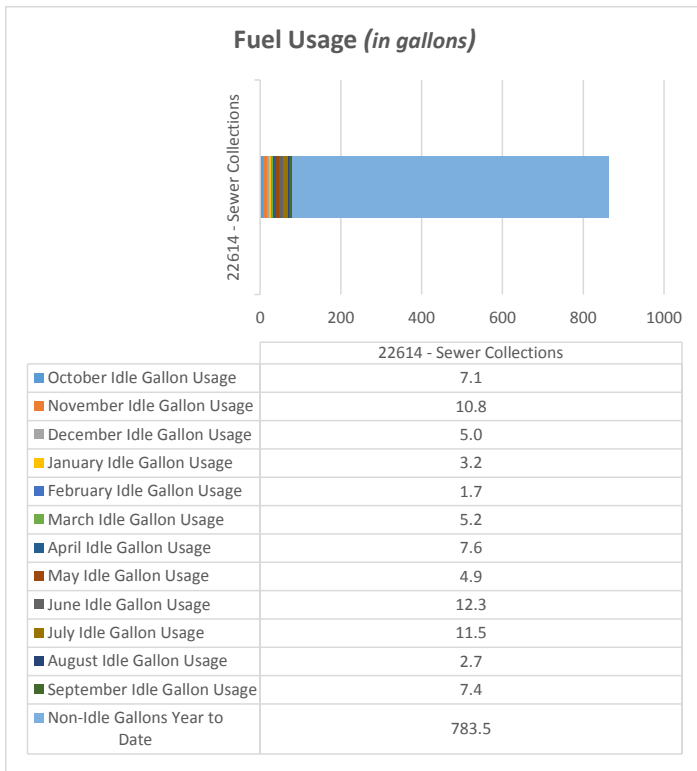
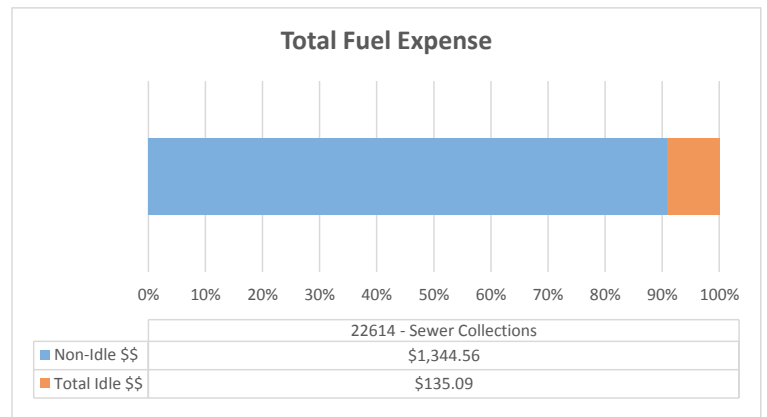
Machine Utilization: Below Average

Backhoe Report

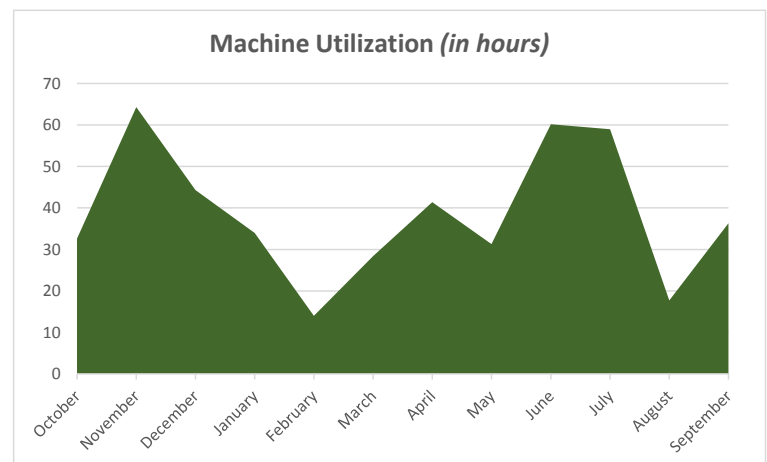
22614 - Sewer Collections



Total Annual Idle Percentage 30.8%



% of Fuel Expense Spent on Idle Time 9.13%

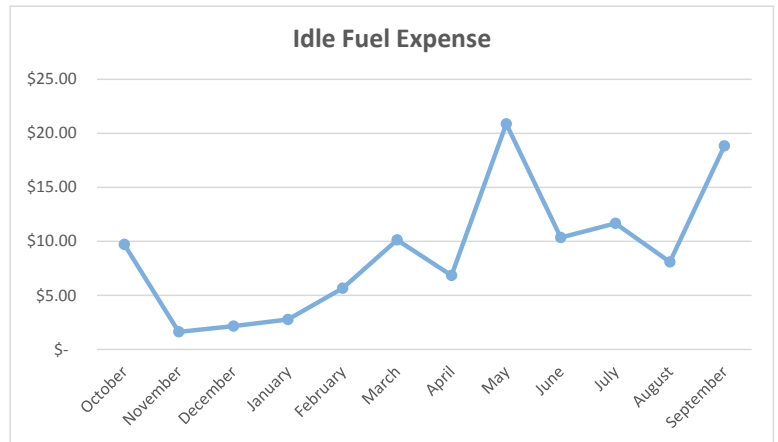
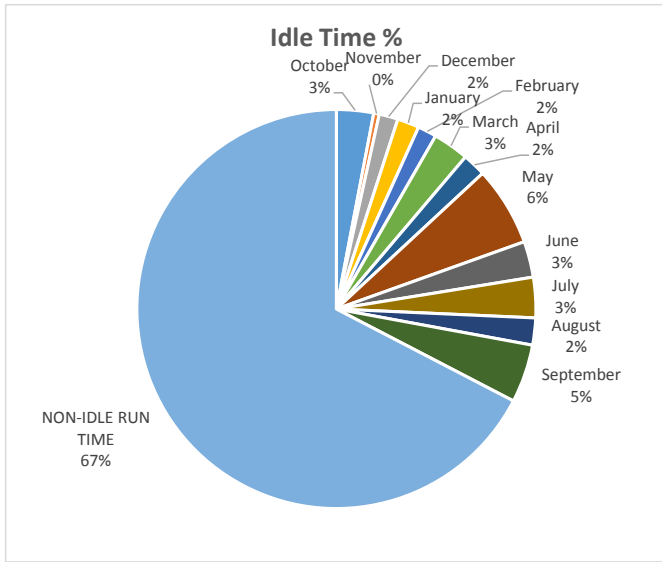


TOTAL MACHINE HOURS 1689

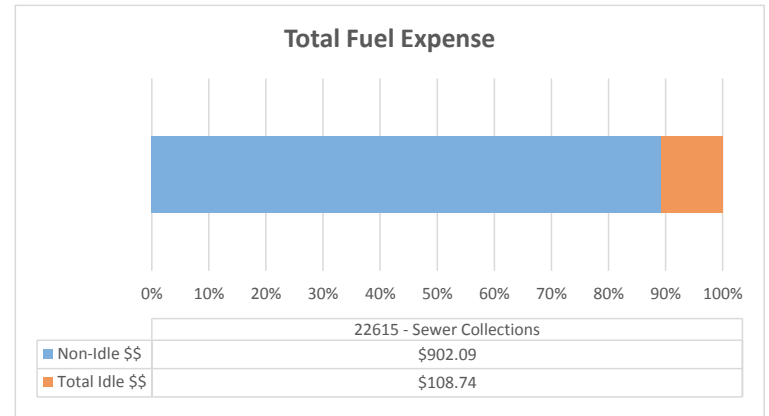
Machine Utilization: Above Average

Backhoe Report

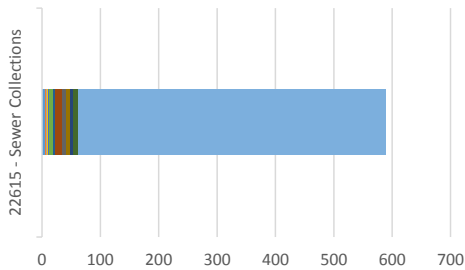
22615 - Sewer Collections



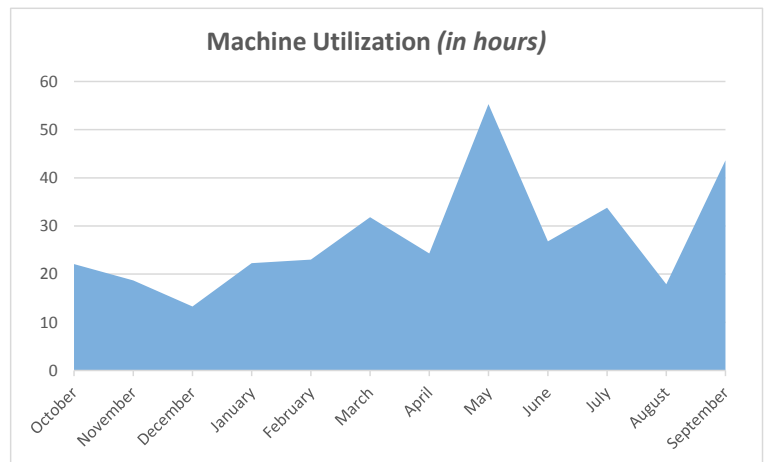
Total Annual Idle Percentage 32.6%



Fuel Usage (in gallons)



% of Fuel Expense Spent on Idle Time 10.76%

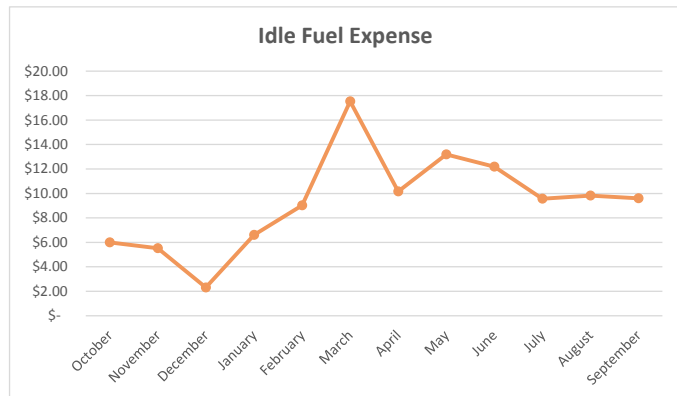
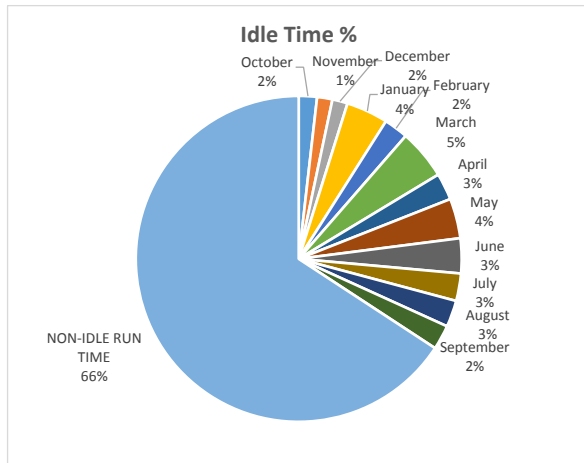


TOTAL MACHINE HOURS 896.8

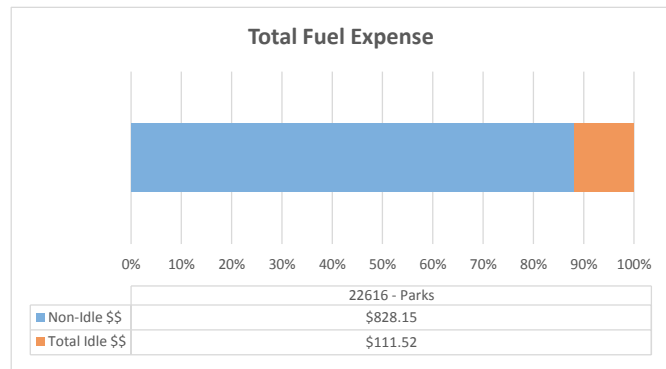
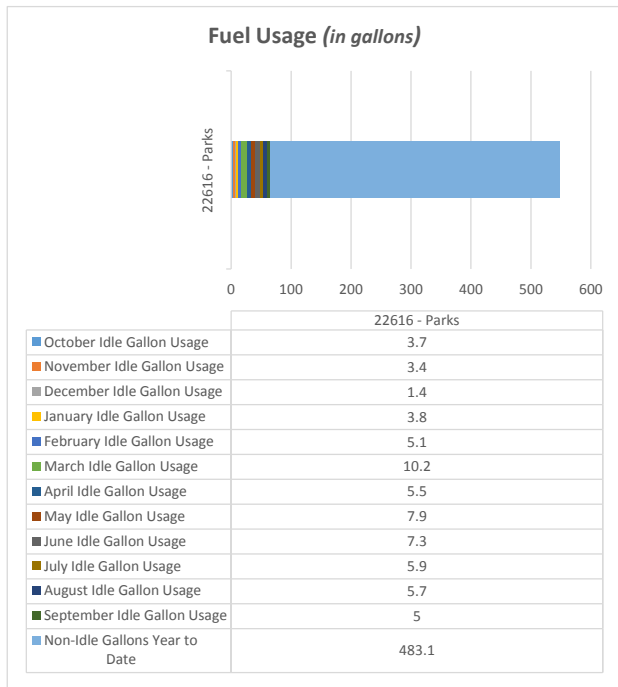
Machine Utilization: Below Average

Backhoe Report

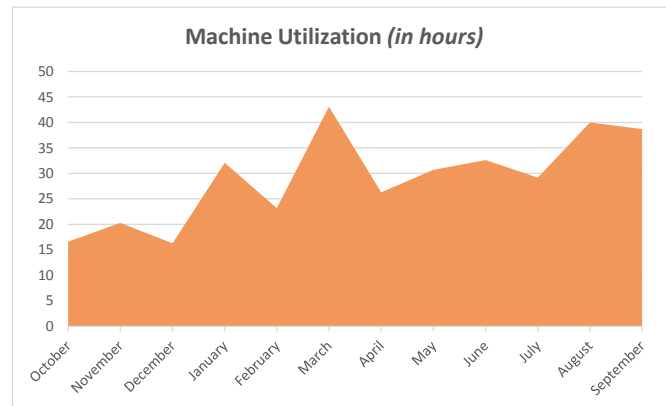
22616 - Parks



Total Annual Idle Percentage **34.2%**



% of Fuel Expense Spent on Idle Time **11.87%**

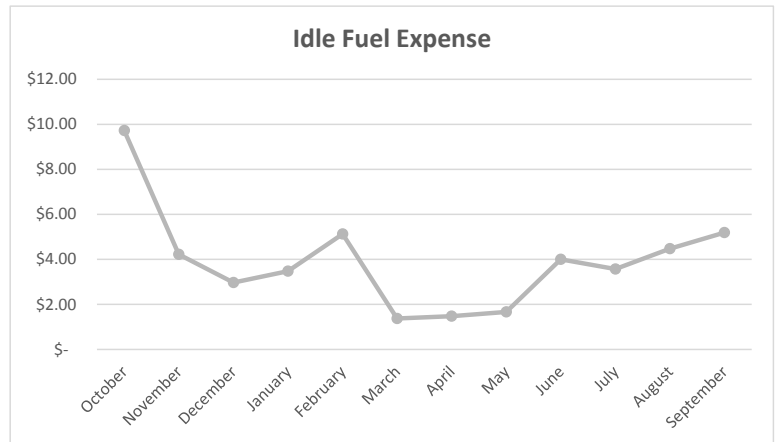
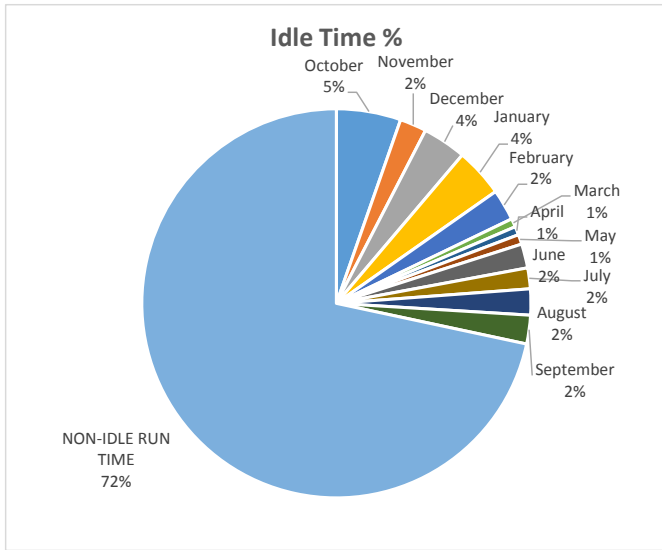


TOTAL MACHINE HOURS **1153**

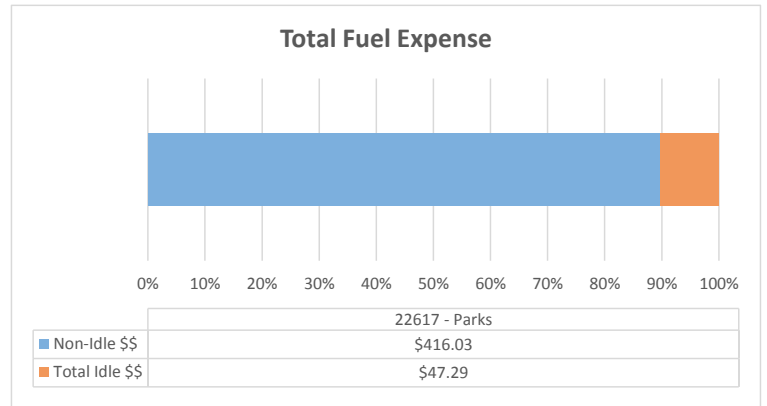
Machine Utilization: **Below Average**

Backhoe Report

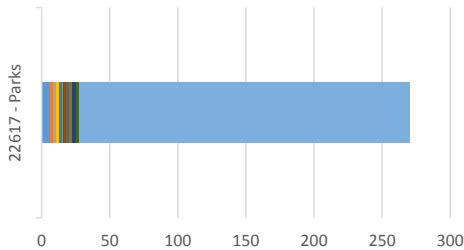
22617 - Parks



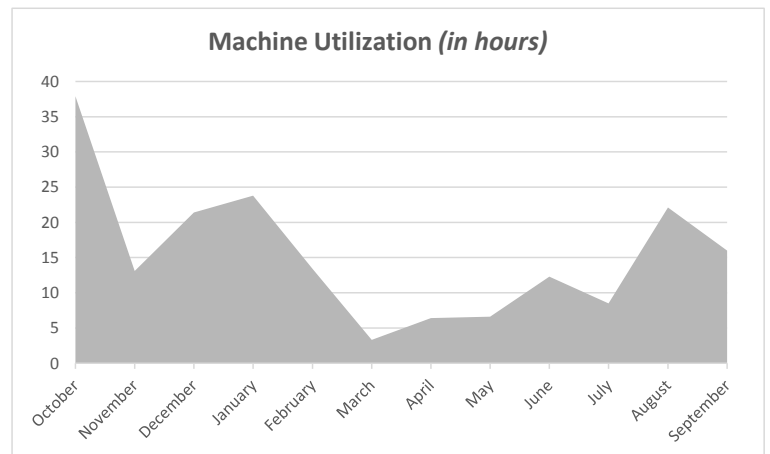
Total Annual Idle Percentage 28.4%



Fuel Usage (in gallons)



% of Fuel Expense Spent on Idle Time 10.21%



TOTAL MACHINE HOURS 768.4

Machine Utilization: Below Average