



CITY OF SAN ANGELO
PURCHASING DEPARTMENT
72 West College Avenue, San Angelo, Texas 76903
(325) 657-4219

ADDENDUM 1

Date: August 26, 2015

RFB No. ES-06-15
Christian Village Drainage Improvement Materials

Location: San Angelo, Texas

Bid Date: ~~August 26, 2015 / 2:30 PM LOCAL TIME~~ **Sept 9, 2015 / 2:00 PM Local Time**

The following changes and/or additions are hereby made to the specifications and contract documents for the above referenced project:

SUBMITTAL DEADLINE:

The proposal submittal deadline will be extended to September 9, 2015 at 2:00pm. The location and procedure for submission remain the same.

REPLACE BID FORMS:

3.1 Scope of Work and Specifications – Replace entire section with attached version.

3.2 Bid Sheet – Replace entire section with attached version.

3.3 Plan Profile Diagram – Replace entire section with attached "PDF ChristianVillageTopoPlan ProfileAmendmentAerial reduced.pdf" and "Christian Village Topo Plan Profile Amendment.pdf"

CLARIFICATIONS:

1. Where the change to specification includes the words, "*or approved equivalent*", Vendors desiring to submit an Approved Equivalent product to the stated specification must contact Purchasing no later than five (5) business days prior to bid opening by email to sapurch@cosatx.us, to submit a request for their product approval (without pricing). Approved Equivalent product Bids not submitted for pre-approval will be considered non-responsive. The Purchasing Department will notify the vendor if their product is an approved equivalent.

This addendum becomes a part of and shall be included with the above referenced specifications and contract documents.

Authorized by: Lance Overstreet
Engineering Services - Project Engineer
Date: August 26, 2015

Regards,

A handwritten signature in cursive script, appearing to read "Darlene Luna".

Darlene Luna, CTPM
Purchasing Specialist



3.1. Scope of Work and Specifications (REVISED)

Scope of Work

This is an RFB for the provision of providing material for the purpose of installing two (2) 48" diameter underground storm sewer pipes of approximately 1800 total feet. Quotes will include piping material, all necessary couplings, fittings as described, FOB (free on Board) to the address specified in San Angelo, TX., and installation guidance/instruction.

Specifications

3.1.1. General

This specification covers the furnishing for Aluminized Type 2, Spiral Rib Pipe (or approved equivalent) and Pipe-Arch for culverts and storm sewers for the types, sizes, and designations as shown on the plans. Piping shall be in accordance with NCSPA's (National Corrugated Steel Pipe Association) recommendations.

All product to be delivered within 30 calendar days of the issuance of the Purchase Order. Time is of the essence in the delivery of this product.

3.1.2. Material

The Pipe shall be fabricated from an ALUMINIZED Type 2 STEEL coil (or approved equivalent) shall conforming to requirements of AASHTO M 274 or ASTM A 929.

- Vendors desiring to submit an Approved Equivalent product to the stated specification must contact Purchasing no later than five (5) business days prior to bid opening by email to sapurch@cosatx.us, to submit a request for their product approval (without pricing). Approved Equivalent product Bids not submitted for pre-approval will be considered non-responsive. The Purchasing Department will notify the vendor if their product is an approved equivalent.*

3.1.3. Pipe

The pipe and pipe-arch shall be manufactured to conform to AASHTO M-36 or ASTM A-760. The pipe shall have a helical corrugation pattern, and shall have the sectional properties per AASHTO Section 12.5.4 .1 or ASTM A-796

3.1.4. Coupling Bonds

Coupling bonds for the pipe and pipe-arch shall be made of the same base metal and coatings as the pipe and pipe-arch. The bonds for the round pipe (48" diameter) shall be a minimum of 16 gage, 12" wide Bell and Spigot Joint with a Fluted Gasket. Hugger bonds for round or pipe-arch shall be a minimum of 18 gage, 12" wide bonds with annular corrugations that are spaced to properly index with re-rolled corrugations of the pipe.

3.1.5. Hydraulics

Values of Coefficient of Roughness (Manning's "n") will not exceed 0.012 or that recognized by other materials.

3.1.6. Structural

Material thickness will be determined based on AASHTO Section 12 and specific loading conditions. For highway loading, minimum Height of Covers are 12", 15" and 18" for up to and including 48" diameter.

3.1.7. Durability

Aluminized Type 2 pipe (or approved equivalent) provides a minimum service life of 75 years in the appropriate environment. ($5.0 \leq \text{pH} \leq 9.0$, $r > 1500 \text{ ohm-cm}$) Considering the application for use is pavement surface runoff with select backfill, it is anticipated that a minimum service life of 75 years will be achieved.

3.1.8. Shipping/Handling/Freight

All materials are FOB (free on Board) to vacant lot/staging site located on the north side of W 306 Frontage Rd. between 4225 Billie Bolin Dr. and 4216 S. College Hills Blvd San Angelo TX 76904. Delivery(s) to be coordinated with operations office at 325-657-4206.

3.1.9. Installation/Guidance & Instruction

Material supplier shall provide all installation guidance, direction and instruction necessary to install product. This guidance may be on-line assistance, or if requested by the city, it may include an on-site representative to assist the city for no more than one (8 hour) day for instruction to City staff on proper installation techniques, etc.

- *The City will not be responsible for costs incidental to this support may including travel, lodging, meals or any other unforeseen costs.*
- *Vendor Certification of Insurance will be provided to the City Risk Management Division prior to any on-site training.*



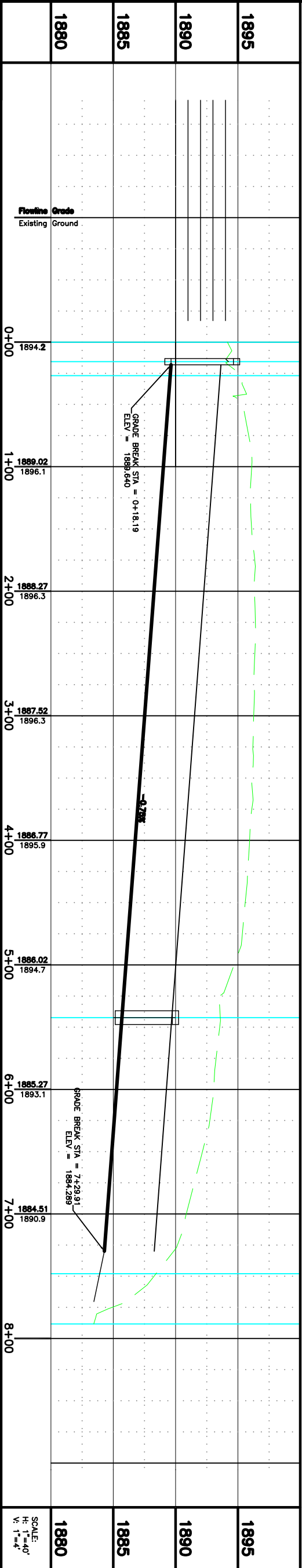
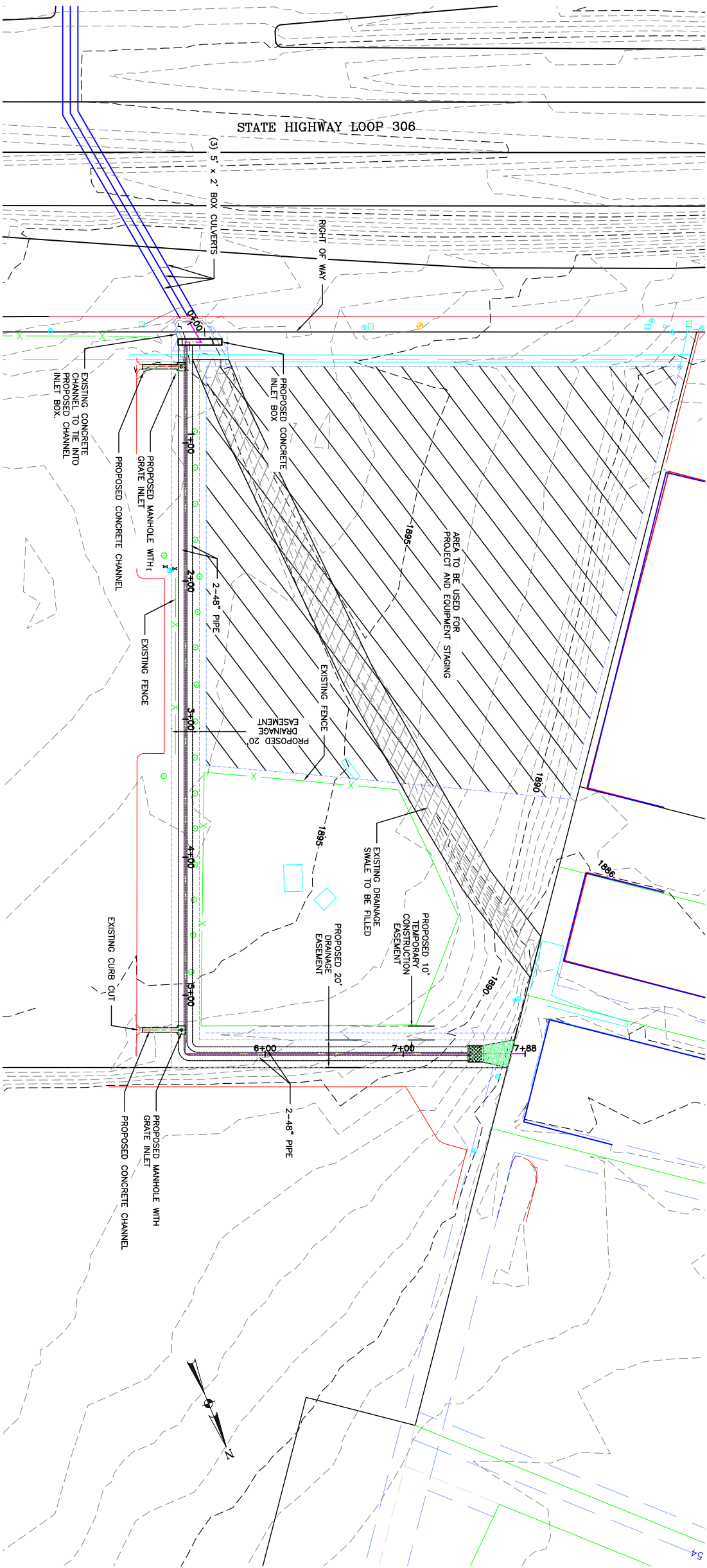
3.2. Bid Sheet (REVISED)

Christian Village Drainage Improvements Project				
Item No.	Quantity Unit	Description	Unit Price/Per LF	Total Amount
1	1800 LF	48" diameter Aluminized Type 2 steel Storm Sewer Pipe in accordance with the plans and specifications for the sum of _____ dollars & _____ cents per linear foot.	\$ _____	\$ _____
2	2 EA.	48" diameter 90° elbow of _____ dollars & _____ cents ea.	\$ _____	\$ _____
3	4 EA	48" diameter x 48" diameter x 36" diameter outlet reducing tee of _____ dollars & _____ cents ea.	\$ _____	\$ _____
4	2 EA	2'X2' Grate and 36" grate drop inlet structure for the sum of _____ dollars & _____ cents ea.	\$ _____	\$ _____
5	2 EA	30" diameter manhole covers and 36" drop inlet structure for the sum of _____ dollars & _____ cents ea.		
6	8 Hour maximum	Installation Consultation/Training Inclusive of all costs associated with travel	Not to Exceed 8 Hours	INCLUDED

Note: Should there be any differences between the unit price and the extended pricing calculations, the unit price will prevail.

THIS FORM MUST BE RETURNED WITH THE BID

BID AUTHORIZED SIGNATURE & CONTACT INFORMATION SHEET P 21 of RFB



DRAWN BY:	DLH
CHECKED BY:	RJP
HORIZONTAL SCALE:	1"=40'
VERTICAL SCALE:	1"=4'
JOB NUMBER:	XXXX
DATE:	MARCH, 2014

DEVELOPMENT SERVICES
DEPARTMENT –
ENGINEERING SERVICES
DIVISION

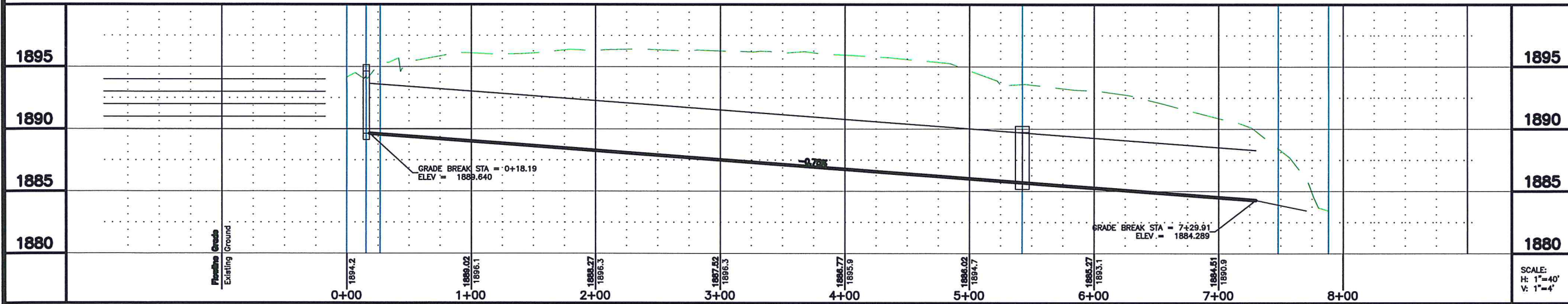
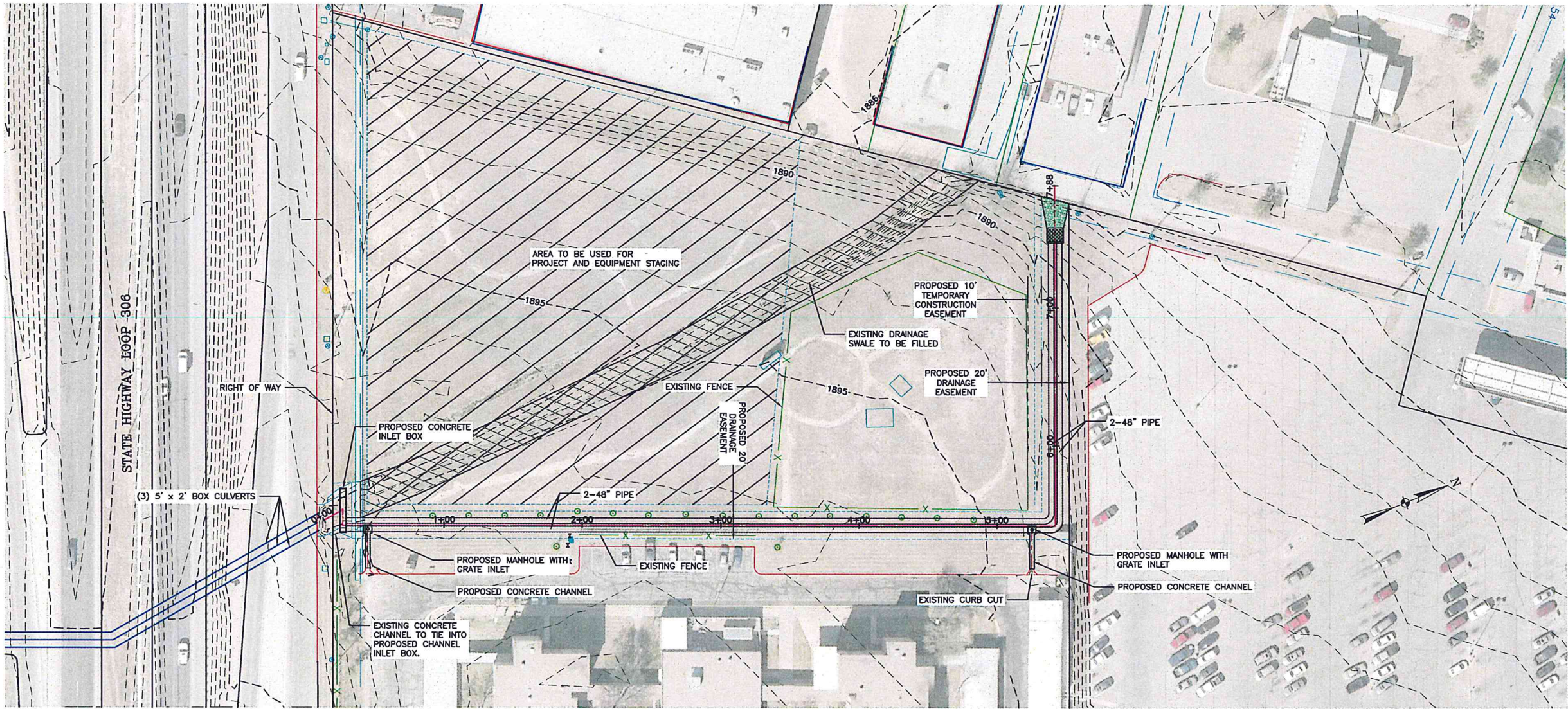


CHRISTIAN VILLAGE STORM SEWER

PLAN PROFILE
STA 0+00 TO STA 7+70.35

THIS DOCUMENT IS
RELEASED FOR THE
PURPOSE OF
INTERIM REVIEW
UNDER THE
AUTHORITY OF
RUSSELL J. FEHL,
P.E., 104765 ON
8-01-2014. IT IS NOT
TO BE USED FOR
CONSTRUCTION
PURPOSES.

D-316



DEVELOPMENT SERVICES
DEPARTMENT -
ENGINEERING SERVICES
DIVISION

CHRISTIAN VILLAGE STORM SEWER
PLAN PROFILE
STA 0+00 TO STA 7+70.35

DRAWN BY: DLH
CHECKED BY: RJP
HORIZONTAL SCALE: 1"=40'
VERTICAL SCALE: 1"=4'
JOB NUMBER: XXXX
DATE: MARCH, 2014

THIS DOCUMENT IS
RELEASED FOR THE
PURPOSE OF
INTERIM REVIEW
UNDER THE
AUTHORITY OF
RUSSELL J. PEHL,
P.E. 104755 ON
8-01-2014. IT IS NOT
TO BE USED FOR
CONSTRUCTION
PURPOSES.

SCALE:
H: 1"=40'
V: 1"=4'

D-316